

---

# **MANOR LAKES NORTH ACTIVE OPEN SPACE (AOS) DRAFT CONCEPT PLAN**

**COMMUNITY ENGAGEMENT SUMMARY REPORT**





## PROJECT BACKGROUND:

Wyndham City Council (WCC) is planning for the development, management and future use of the Manor Lakes North Active Open Space Reserve on Holyoake Rd, Manor Lakes. The consultation period was held between 7 – 28 August 2020.




### The purpose of the engagement was to:

- Seek feedback from the community about the upcoming development.
- Determine how the community will use the future reserve.
- Determine community's interest of possible features within the park.
- Gain feedback to inform the final draft design of the park prior to council endorsement.

The Master Plan will include recommendations that consider the cultural and environmental values of the Reserve, landscape and amenity, sporting infrastructure requirements and pathway connections. Engagement with the community to understand what they like through the Master Plan has been undertaken. A summary of the consultation process and feedback received is provided below.

## METHODOLOGY:

The below table outlines the various methods and techniques used to engage with the community.

Method / technique	Stakeholders engaged	Dates
 <b>Project page on The Loop and Social Pinpoint</b>	<b>1524 people</b> visited the site <b>113 comments</b> were made on the draft concept plan via social pinpoint. <b>59 discussions</b> were had on more than one comment	7th– 28th August 2020
 <b>Online survey</b>	<b>69 people</b> participated in various parts of the survey	7th– 28th August 2020
 <b>Mail out</b>	<b>3559 postcards</b> sent to the 1km catchment*	7th– 28th August 2020

\*Council notes that some postcards were returned to sender due to vacant land parcels.

The consultation was tailored to suit Covid-19 restrictions in place at the time which resulted in the initiation of an online community engagement and consultation presence only utilising an interactive platform (Social Pinpoint) via The Loop.

The Social Pinpoint platform was identified as the most appropriate fun

and effective community engagement interactive platform at the time of undertaking the consultation and proved to be very successful. The platform was the first time used on a WCC community engagement project. The results indicate increased community interest, participation and feedback received with 1524 visits and over 113 comments and 59 discussions being held.



# SUMMARY OF FEEDBACK:

Below outlines the summary of the feedback received and how it has been incorporated into the project.

## WE ASKED

### WHAT PLAYGROUND FEATURES WOULD YOU LIKE TO SEE INCLUDED?

*(Answers were selected from a pre-determined list)*

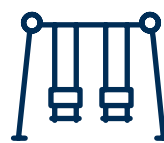
## THE TOP 4 ANSWERS WERE:



**12**  
CLIMBING



**11**  
SLIDES



**11**  
SWINGS



**8**  
NATURE PLAY

## WE DID

The feedback indicated a diverse response to playground features the community would like to see in the park.

Based on this result, the draft Masterplan will incorporate Nature Play, climbing, swings and slide elements as key features of the main playground. The design will be determined during the detailed design process.

## WE ASKED

### WHAT FEATURES ARE MOST WANTED?

*(Answers were selected from a pre-determined list)*

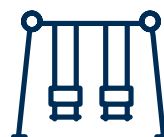
## THE TOP 3 ANSWERS WERE:



**14**  
BBQ/SHELTER



**11**  
PICNIC AREA AND SEATING



**9**  
SWINGS

The majority of the respondents wanted to see a BBQ and picnic area within the reserve, and this will be incorporated into the plan.

## WE ASKED

HOW WILL THE  
PARK BE USED?

## ANSWERS RANKED FROM HIGHEST TO LOWEST



20  
RELAXING



20  
WALKING/  
RUNNING



13  
SOCIALISING



12  
CYCLING



12  
EXPLORING



10  
PLAYGROUND



10  
INFORMAL SPORT



9  
FORMAL SPORT

## WE DID

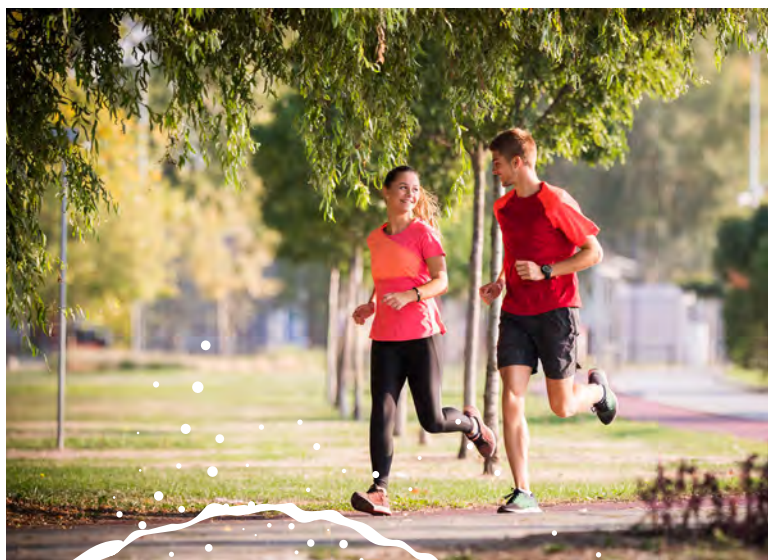
The draft concept design provides a good balance for how the community wish to use this reserve. The 2km path network will cater for the walking, running and cycling cohort.

The natural environment with the creek corridor and established trees with planned landscaping and grassed areas will provide spaces for exploring and for people to relax and socialise with their friends and family along with BBQ and picnic areas.

There will be two playgrounds located at this reserve a small playground catered for younger children near the pavilion and tennis courts and a larger playground suitable for intergenerational play located at the north of the reserve.

The oval, cricket nets and tennis courts will provide a space for formal sport and will be activated by the Sport and Recreation Development Team.

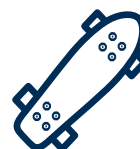
Informal sport will be catered for by the inclusion of a full basketball court, volleyball/ badminton space and kick about grass areas throughout the reserve. Council officers will consider skate and BMX elements and how these elements could be incorporated into the draft master plan.



**WE ASKED****PLEASE RANK THE  
INFORMAL SPORTS  
ACTIVITIES****ANSWERS RECEIVED IN ORDER OF PREFERENCE WERE (LISTED BY HOW MANY  
TIMES THAT WERE RANKED IN TOP 3):****15****VOLLEYBALL***(9 times ranked at  
number 1)***13****BASKETBALL***(5 times ranked at  
number 1)***13****SOCCER***(4 times ranked at  
number 1)***6****CYCLING***(5 times ranked at  
number 1)***WE DID**

Basketball and Volleyball were not only ranked the highest in the survey, however a basketball court was overwhelmingly supported in the general comments from the community. As a result, a full basketball court and volleyball court (that can be used for other sports including badminton) will be incorporated into the draft master plan.



**WE ASKED****ADDITIONAL FEEDBACK  
PROVIDED DURING  
CONSULTATION****MORE TREES/  
LANDSCAPING****DOG OFF LEASH  
PARK****BADMINTON  
COURTS****RUBBISH BINS****WATER FOUNTAIN****WATER PLAY****SWIMMING POOL****LIGHTING (FOR  
SECURITY)****PUBLIC TOILETS****TRAFFIC AND  
PARKING****COMMUNITY USE  
AND EVENTS****SKATE PARK****ACCESS ALL  
ABILITIES****WE DID**

Where possible these items will be included in the updated draft plan.

Public toilets will be provided within the pavilion footprint.

Changes to the circulation of the car park have been considered based on discussions with Wyndham City Council traffic engineers and the community comments received.

Some of the elements are not shown in the updated concept plan. These will be explored throughout the detailed design phase:

- Lighting
- Planting layout
- Bin locations
- Signage
- AAA

Considering the strategic intent in the development of the reserve a dedicated dog off lead and water play area is not appropriate within this park location and better suited to a larger facility.

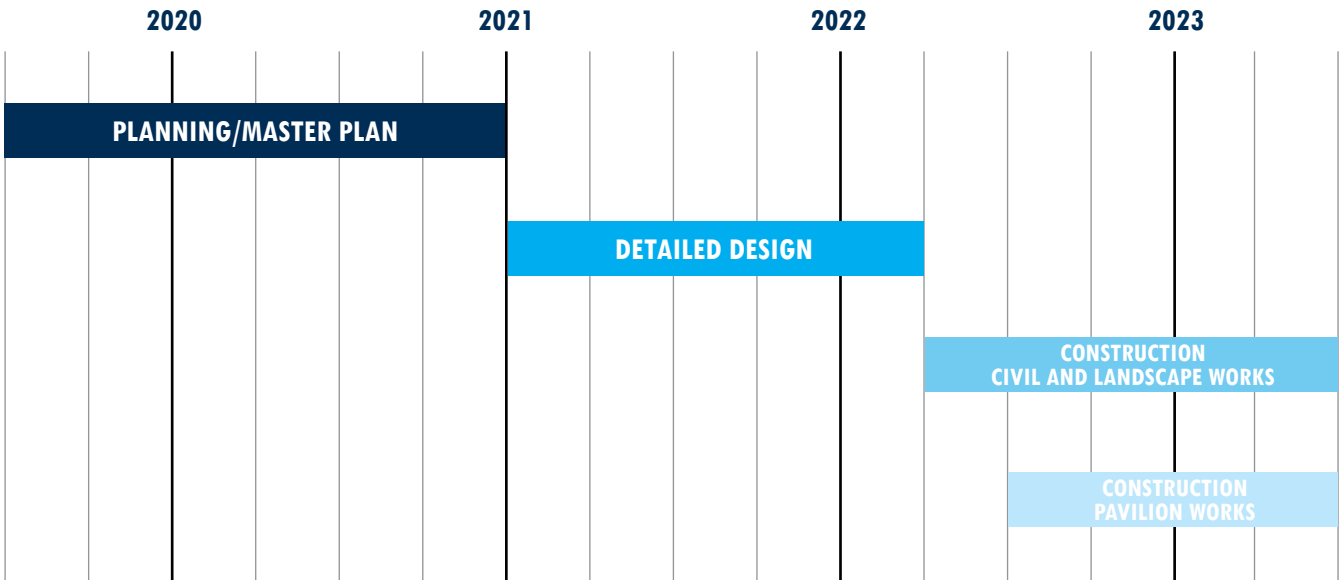
Council will consider these suggestions in future masterplans at appropriate sites and will not be included in the Manor Lakes North draft concept plan.

An aquatic facility has not been included in this plan as it does not align with Council's Aquatic Strategic Plan.

# NEXT STEPS:

Detail of the next steps and project delivery will be phased over a three-year period anticipated to be completed by the end of 2023.

*Please note: The time-line is indicative only and subject to future funding and budget approval.*



## How can participants stay involved/informed?

Participants can stay informed with updates available on Council’s website [www.theloop.wyndham.vic.gov.au](http://www.theloop.wyndham.vic.gov.au)

## Contact details for further information

Email: [recreationstrategy@wyndham.vic.gov.au](mailto:recreationstrategy@wyndham.vic.gov.au)

