

# A VISION FOR LAWRIE EMMINS RESERVE

Draft Master Plan - March 2019





# LAWRIE EMMINS RESERVE

## Draft Master Plan

March 2019

## Introduction

### Project purpose

The City of Wyndham has initiated the development of a Master Plan to guide the potential future redevelopment and improvement of sport, recreation, open space and community infrastructure provision at Lawrie Emmins Reserve, Laverton North. The intent of the Master Plan is to present a long term vision for the reserve, focussed on creating opportunities for increased community use of the reserve whilst enhancing its appeal, amenity, safety, environmental values and status as a Regional Park.

### Background

- There are a number of Council plans and strategies that have an influence on the future development and use of Lawrie Emmins Reserve. These are outlined in Volume 2 Strategic Context for the Master Plan, including the previous Master Plan for the site which was developed in 2007. The City of Wyndham has undergone significant change since the 2007 Master Plan was developed, largely driven by rapid population growth which has led to further refinement and extension of the designated Urban Growth Boundary (UGB).
- With the extension of the UGB and completion of existing sub-division opportunities, Council has been able to plan for adequate provision of active open space (i.e. playing fields) to accommodate the current and future needs of the community without relying on active open space within Lawrie Emmins Reserve. This has been confirmed via Council's Open Space Strategy 2045, Wyndham Sports Strategy 2045 and future growth area planning (e.g. Truganina South Community Precinct Structure Plan).
- With planning to provide for organised sports at other venues confirmed, opportunities for future use and development of Lawrie Emmins Reserve to support broader community health and physical activity participation have emerged. In particular Council's Skate, BMX and Bike Strategy (2013) and Wyndham Sports Strategy (2017) have both identified opportunities for Lawrie Emmins Reserve to become a regionally significant cycling venue to support formal and informal physical activity participation. Development of regionally significant cycling facilities is also directly consistent and complementary to the Cycling Victoria State Facilities Strategy 2016 – 2026.
- Whilst the City's Hard to Locate Sport and Recreation Strategy (2017) supports provision of Motocross at Lawrie Emmins Reserve in the short-medium term, it is acknowledged that such use is not likely to be compatible with future use or development of the reserve, particularly given the proximity of the reserve to emerging residential communities. Therefore the Master Plan will outline actions to support Motocross at the site over the next 10-years, however the master plan will also consider a longer-term vision and opportunities for the reserve that may not ultimately include Motocross.

## Next Steps





## Current use and challenges

- Lawrie Emmins Reserve is currently used for a range of formal and informal community activities. Formal sports use includes cricket (1 oval), softball (1 diamond), scouts and archery (field and target). However the reserve is also used for a number of informal (and some illegal) uses, including 4WD, motor bikes, dog walkers and drone flying to name a few. The reserve also includes the existing Wyndham Arts Alliance facilities, which provides work spaces, studios and workshops for local artists.
- The Wyndham Open Space Strategy identifies Lawrie Emmins Reserve as an important regional open space. However the current uses, amenity, functionality and appeal of the reserve are not befitting of such a strategically important parcel of community open space. It does not look and feel like a Regional Park.
- Some of the challenges associated with the reserve include illegal uses, access, security, amenity and general lack of appeal. The reserve is largely undeveloped and lacks formal infrastructure, landscaping and defined paths or trails to encourage use. The Wyndham Open Space Strategy notes that Lawrie Emmins Reserve has the capacity to provide for a range of active and passive uses, including community events, arts, informal recreation and sporting activity with a particular focus on cycle sports.
- In addition, the Wyndham Sports Strategy confirms that walking and cycling paths are frequently the most used open space infrastructure. Cycling is the second highest recreation activity undertaken by residents in Wyndham with community participation expected to increase by 57%.

The following draft Master Plan therefore presents a long term vision and recommended infrastructure provision for the reserve in order to contribute to the health and wellbeing of residents by increasing opportunities for participation in a diverse range of physical activities. The Master Plan will create opportunities for increased community use of the reserve whilst enhancing its appeal, amenity, safety, environmental values and status as a Regional Park.

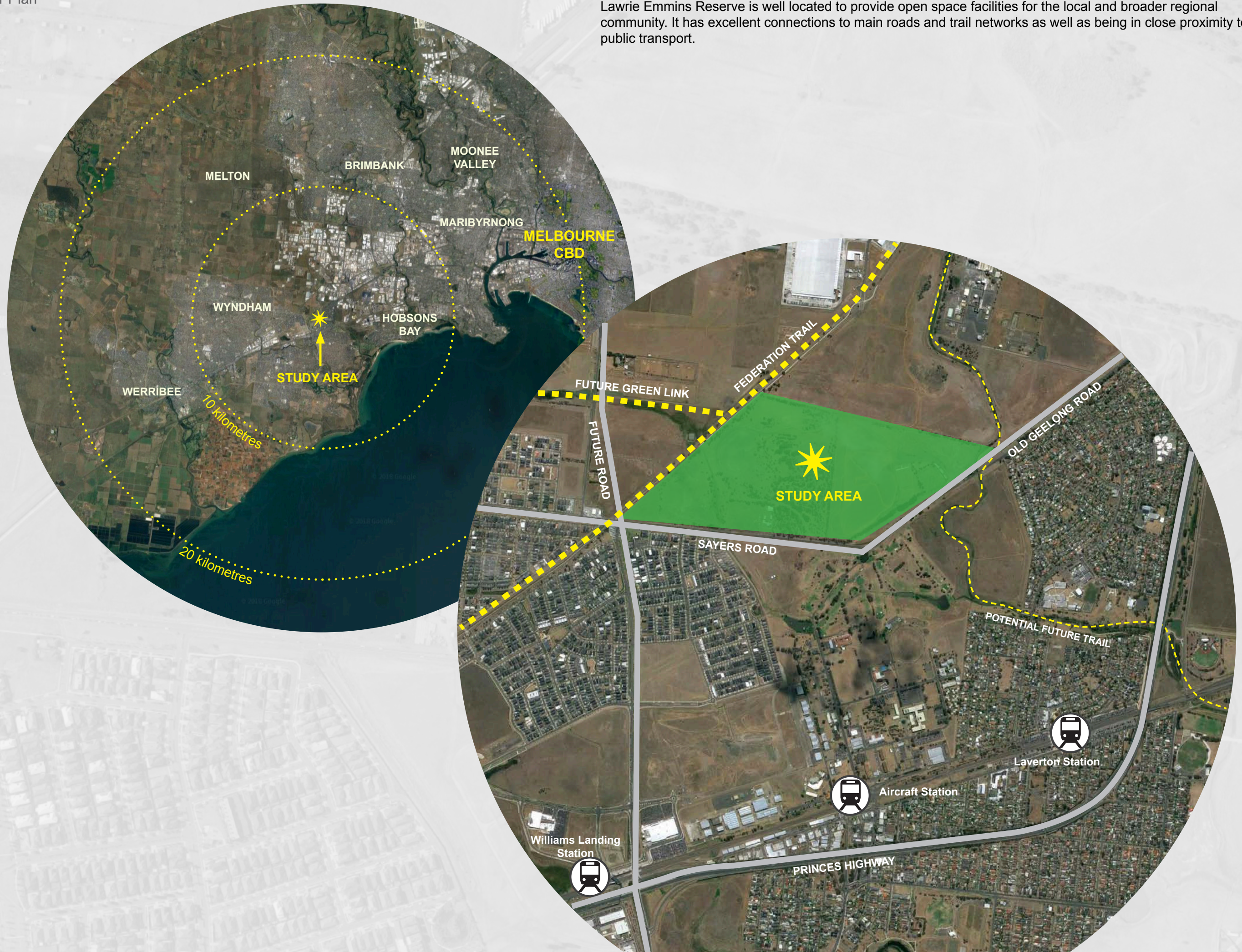
The Master Plan sets out a visionary framework for development of the reserve and will rely on the contribution of multiple partners, stakeholders and sources of funding to come to fruition. The Master Plan will identify key priorities for implementation over the next ten years, however full achievement of the vision is likely to be achieved over a longer time frame. This Master Plan establishes a foundation for the journey to transition Lawrie Emmins Reserve into a regionally significant community park to service the needs of Wyndham residents and to become a destination in its own right.





## Location

Lawrie Emmins Reserve is well located to provide open space facilities for the local and broader regional community. It has excellent connections to main roads and trail networks as well as being in close proximity to public transport.





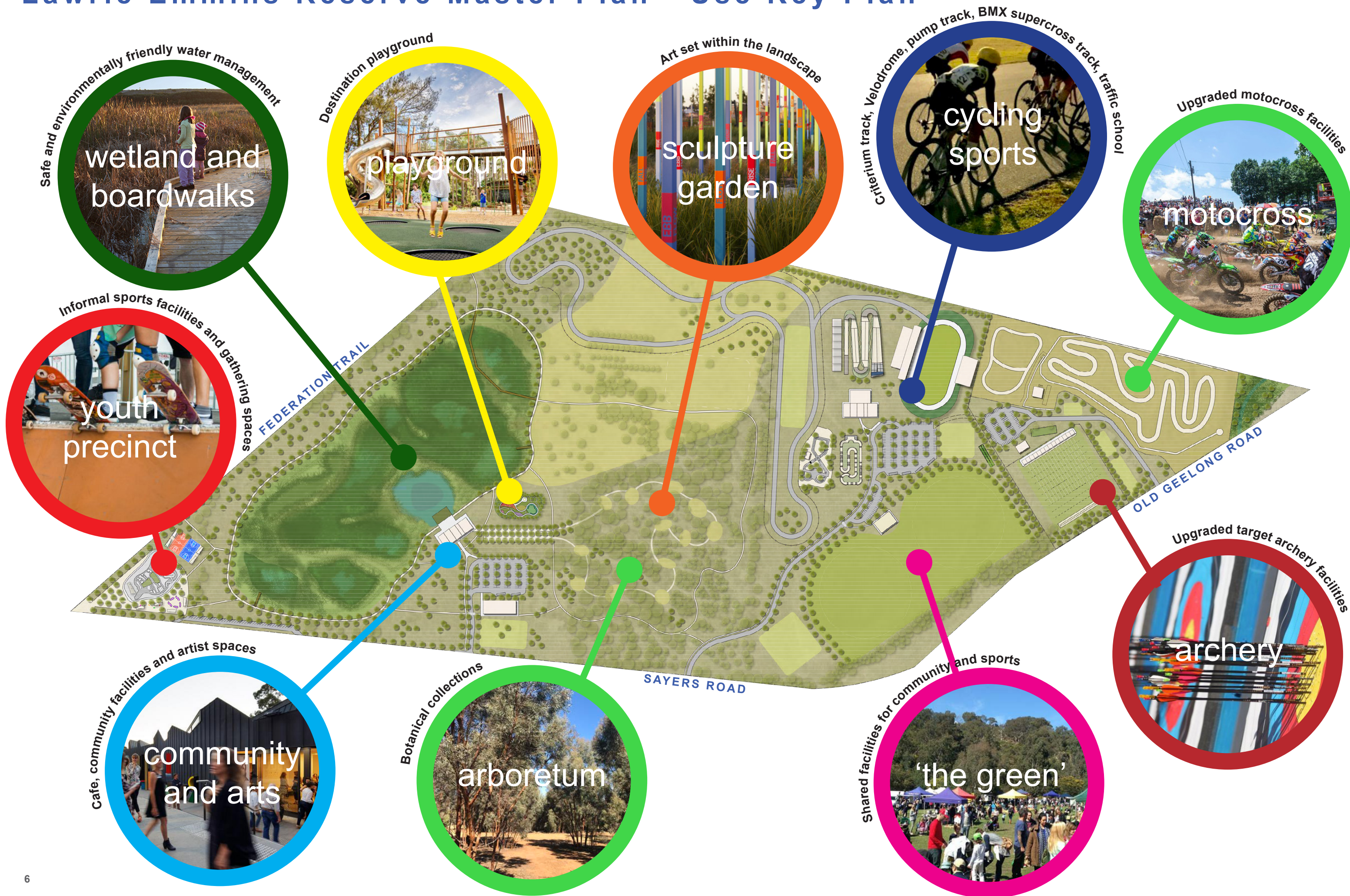
# Lawrie Emmins Reserve Master Plan - Site Vision

- A multi-use community open space and regional destination.





# Lawrie Emmins Reserve Master Plan - Use Key Plan







## Destination for 2 wheeled sports

### Rationale

- While there are local BMX facilities at Glen Orden Reserve there are no regional BMX facilities in Wyndham.
- There are no velodromes in the west of metropolitan Melbourne.
- There is a need to develop off road cycling circuits (criterium) in inner metropolitan Melbourne and the west and north of metropolitan Melbourne.
- Consultation with Cycling Victoria and BMX Victoria confirmed support for establishment of a regional cycle sports hub in the west of Melbourne to accommodate all disciplines of the sport and capable of catering for all levels of participation from community to elite.
- The Wyndham Sports Strategy (2017) identified high demand for recreational and sports cycling.

### Facilities proposed at Lawrie Emmins Reserve:

- Shared central pavilion with approximately 1500m<sup>2</sup> floor space. To include change rooms, administrative office spaces, social spaces, storage, public toilets etc.
- Shared pavilion to be serviced by sealed car park of approximately 6500m<sup>2</sup>. There is potential to make use of the sealed car parks to the south and east, as well as adjacent open grass areas, for overflow parking on event days. By comparison, the criterium and BMX track facilities at Casey Fields are serviced by an informal car park of approximately 12000m<sup>2</sup>.
- BMX Supercross Track (Olympic standard) with spectator stands. To incorporate two start ramps (5m and 8m) with major double-jumps, step ups and a technical 'rhythm' section.
- Outdoor velodrome (Olympic standard 250m long track) with spectator stands and additional storage/ office space.
- Pump track - 300m long, with spectator stand/ starting point. Loop design, suitable for multiple users.
- Traffic school with track suitable for bikes, scooters and ride-on pedal cars. Elements including roads, roundabouts, intersections, street signs, traffic lights, railway crossings and mini trams. Shade and seating for guardians.
- Criterium track. Dedicated 1800m long fenced asphalt track with alternative 1000m loop.
- The site will not be suitable for mountain biking (although there may be potential in the future to repurpose the motocross facilities for mountain biking), however on-site facilities may be used as a hub for use of existing tracks in the region.
- Motocross track. Refurbished existing track and new fencing. Addition of small pavilion (approximately 230m<sup>2</sup> floor space) for storage. Track to be serviced by a sealed car park of approximately 3300m<sup>2</sup> (including trailer parking spaces) and public toilets (to be shared with the archery facility). There is potential to make use of the sealed car park to the west, as well as adjacent open grass areas, for overflow parking on event days. By comparison, Broadmeadows Motocross Park is serviced by an informal car park of approximately 2250m<sup>2</sup>.
- Green buffer to be created between motocross facility and adjacent creek.





community centre

installations



destination playground

artist studio and exhibition spaces



cafe

sculpture walks

workshop spaces



## Destination for community, arts and culture

### Rationale

- Wyndham needs to increase provision of leisure activities to serve the requirements of its fast-growing population.
- Co-location of facilities to complement regional park, open space and playground creates synergies.
- A place for learning, relaxing, working, meeting people.
- A potential tourist attraction, drawing visitors to the area.
- Maintains the existing arts presence.

### Facilities proposed at Lawrie Emmins Reserve:

- Potential community facilities to support the activation of the regional open spaces including cafe, public toilets and shelters. Potential community facilities determined based on community need as identified through Council's plans and strategies.
- Outdoor spaces capitalising on the interfaces with the arboretum and wetland. These could include a paved sculpture plaza under trees, and a large deck/ plaza overlooking a pond in the wetland.
- A large, district or regional standard playground with diverse equipment, including accessible equipment.
- An integrated, extensive, accessible path network with links to paths and trails in the surrounding area.
- Installations and permanent artworks integrated into the landscape, including a permanent sculpture walk through the arboretum.
- Potential new art facility and/or studio to be developed based on the development of an arts and culture strategy. The facility could include studio spaces, workshop spaces and office space, with the potential to cater for larger scale artworks.
- Facilities are to be serviced by sealed car park of approximately 4200m<sup>2</sup>. There is potential to make use of adjacent open grass areas for overflow parking on event days. By comparison, Heide Museum of Modern Art is serviced by a formal car park of approximately 1300m<sup>2</sup> and an informal car park of approximately 1500m<sup>2</sup>.





## A place to experience nature

### Rationale

- Existing trees and grassy swathes already provide interest and character to the reserve.
- Wetlands constructed to improve the functioning of Doherty's Creek will create a focal point for the western part of the reserve, as well as providing habitat for flora and fauna.
- Circuit paths around the wetland and arboretum can be used to promote physical activity and fitness.

### Facilities and works proposed at Lawrie Emmins Reserve:

- Existing landscape qualities can be enhanced by additional planting and landscape management.
- Species information will be provided in the arboretum. A dedicated Master Plan and Landscape Plan will be required for this space.
- The wetland will be redesigned and reconstructed to contemporary standards. The wetland design will include areas of open water.
- Decks, viewing platforms and a boardwalk will facilitate safe interaction with the wetland.
- An integrated, extensive, accessible path network will enable visitors to walk through the arboretum and grassland areas in the west of the reserve, and around the wetland. The internal path network will link to paths and trails in the surrounding area and to transport nodes.
- A well-constructed, accessible path network will be developed to support informal community use and possible use as a fitness trail. These uses will be complemented by other pedestrian infrastructure such as directional and interpretive signage, distance markers along circuits, seating, public toilets etc.
- The wetland is a Melbourne Water project in collaboration with Wyndham City.





## The youth precinct: an activated gateway

### Rationale

- The south-western corner of the reserve will be the primary interface between the reserve and the surrounding residential area. It is important for it to be a vibrant, activated gateway that welcomes people into the reserve.
- A purchase or transfer of land will be necessary as Council does not own the lot.

### Facilities and works proposed at Lawrie Emmins Reserve:

- Planting as buffer to future major intersection.
- A large plaza area with shade and seating, and space for food trucks.
- Picnic and barbeque facilities, particularly on the side adjacent to the wetland.
- Public toilets.
- Skate park facilities and features.
- Outdoor bouldering walls.
- Outdoor table tennis tables.
- Outdoor basketball/ multi-use courts.
- Facilities are to be serviced by sealed car park of approximately 1600m<sup>2</sup>.
- The precinct will provide a pedestrian link between Federation Trail and the reserve.



shared use pavilion



scouts



event space



target archery



drones



cricket



## ‘The Green’ (for events, scouts, cricket and drone use) and target archery

### Rationale

- The south-eastern corner of the reserve will continue to facilitate the existing target archery, scouts and cricket uses.
- An outdoor event space will be co-located with the sports fields.

### Facilities and works proposed at ‘The Green’:

- ‘The Green’ is to be an outdoor mown grass event space suitable for major events, approximately 350m x 150m, surrounded by trees.
- This area is to be suitable for use as two senior cricket ovals. The extent of earthworks required to accommodate the ovals will be determined by detailed design, determined by whether preference is for a single space at one level (forming an amphitheatre at one end), or separate terraced spaces.
- A new shared pavilion will be provided (approximately 600m<sup>2</sup> floor space) with toilets, change rooms, storage, social space and dedicated community rooms for scouts and cricket.
- Facilities will be available to be booked by drone user groups.
- Pavilion to be serviced by sealed car park of approximately 1000m<sup>2</sup>, with the option to use the sealed car parks to the north and north-east, as well as adjacent open grass areas, for overflow parking on event days. As a guide, the Wyndham Sports Facility Capital Development Guide requires provision of 100 parking spaces for two ovals.

### Facilities and works proposed for archery:

- Target field to be moved and extended to provide a dedicated range at least 100m long and 80m wide with flat terrain, barrier fencing, and wind breaks.
- Addition of public toilets (approximately 230m<sup>2</sup> floor space) including storage, to service archery fields, motocross and community use.
- A sealed car park of approximately 3300m<sup>2</sup> to be shared with the motocross facility. There is potential to make use of the sealed car park to the west, as well as adjacent open grass areas, for overflow parking on event days. By comparison, Yarra Bowmen Archery Club is serviced by a sealed car park of approximately 1300m<sup>2</sup>.



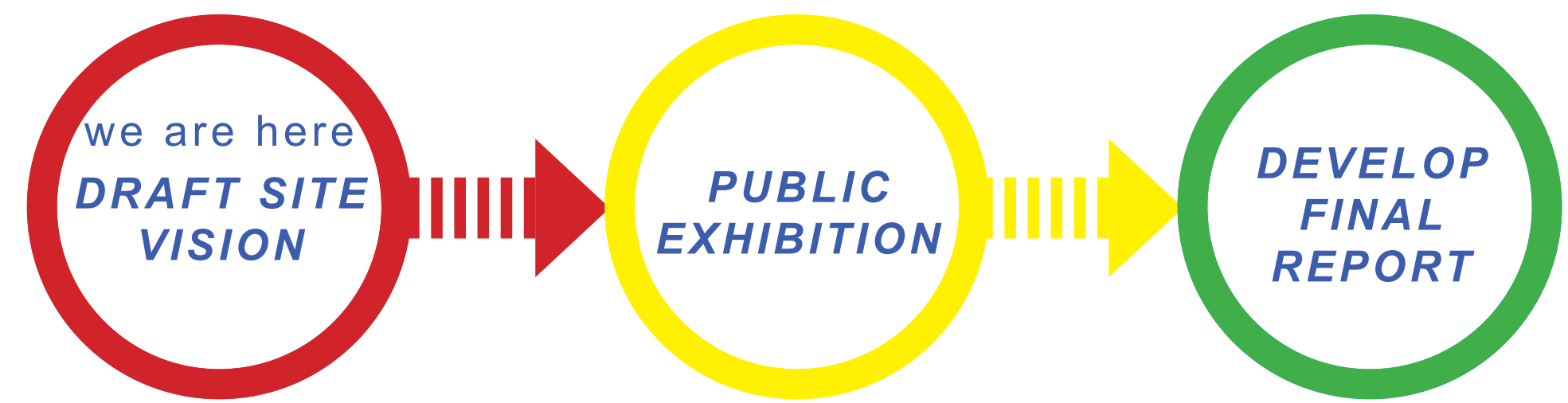
THIS PAGE HAS BEEN LEFT INTENTIONALLY BLANK



# Background information

For background and supporting information to this Master Plan refer to the document Volume 2 Strategic Context.

# Next steps



**Image credits:**  
ASPECT Studios ([www.aspect-studios.com](http://www.aspect-studios.com))  
Brett Boardman ([www.architectureau.com](http://www.architectureau.com))  
Christie Barbeques ([www.dachristie.com](http://www.dachristie.com))  
City of Moonee Valley ([www.mvcc.vic.gov.au](http://www.mvcc.vic.gov.au))  
Cricket Victoria ([www.cricketvictoria.com.au](http://www.cricketvictoria.com.au))  
Google Maps ([www.maps.google.com.au](http://www.maps.google.com.au))

Heide Museum of Modern Art ([www.artshub.com.au](http://www.artshub.com.au))  
Heide Museum of Modern Art ([www.heide.com.au](http://www.heide.com.au))  
Hello Sydney Kids ([hellosydneykids.com.au](http://hellosydneykids.com.au))  
Luke Thompson ([www.architectureau.com](http://www.architectureau.com))  
Motosport ([www.motosport.com](http://www.motosport.com))  
MPH Architects ([www.mpharchitects.com.au](http://www.mpharchitects.com.au))

Nat Bromhead ([www.bicyclingaustralia.com.au](http://www.bicyclingaustralia.com.au))  
Public Outdoor Ping Pong ([www.popp.world](http://www.popp.world))  
Scouts Australia ([www.scouts.com.au](http://www.scouts.com.au))  
Skate Girls Tribe ([www.skategirls.com](http://www.skategirls.com))  
Sleeman Sports Complex ([www.sleemansports.com.au](http://www.sleemansports.com.au))  
Sleeman Sports Complex ([via YouTube](#))

South Melbourne Night Market ([www.southmelbournenightmarket.com.au](http://www.southmelbournenightmarket.com.au))  
Star Weekly ([www.starweekly.com.au](http://www.starweekly.com.au))  
TrailScapes Pty Ltd ([www.trailsapes.com.au](http://www.trailsapes.com.au))  
Waverley City Archers ([www.waverleycityarchers.com.au](http://www.waverleycityarchers.com.au))  
Weekend Notes ([www.weekendnotes.com](http://www.weekendnotes.com))  
Wyndham History ([www.wyndamhistory.net](http://www.wyndamhistory.net))