

2021/22 Annual Plan & Budget

Community Engagement Report



Contents

Introduction	3
Shaping Wyndham Survey.....	3
Community Conversations	4
Engagement Approach	5
Community Engagement Outcomes	6
Shaping Wyndham Survey Findings Summary.....	6
Community Conversations Findings Summary	9
Overarching Combined Outcomes	14
Summary of Proposed Annual Plan and Budget 2021/22	14
Next Steps	14
Appendix 1 – Shaping Wyndham Survey detailed findings.....	15
Priorities by Theme	15
Appendix 2 – Community Conversations Final Priorities.....	17



Wyndham City acknowledges that Aboriginal people have lived in this area for tens of thousands of years. Council acknowledges the Wadawurrung, Woiwurrung and Boonwurrung peoples of the Kulin Nation as the Traditional Custodians of these lands around the Werribee River. We also recognise the diversity of Aboriginal and Torres Strait Islander peoples who now participate in the life of this city and contribute to its richness. Council pays respect to the wisdom of Elders, past and present. We share commitment to engaging communities with respect for the land and the rights of Aboriginal people to determine their future in this place.

Introduction

Council delivers a wide range of programs, services, facilities and advocacy initiatives that all contribute to Wyndham's future. How these are delivered involves good financial management to ensure projects are prioritised based on what our community needs. Community input is a vital part of the budget planning process as it helps inform and guide our decision making and consider how we might plan to better address priorities.

This report provides an overview of the various community engagement activities undertaken by Council between November 2020 and March 2021 to better understand the priorities of our community. These insights have been used to inform the Proposed Annual Plan and Budget 2021/22.

The engagement activities included two distinct opportunities for community members to get involved:

- Ideas submitted through the Shaping Wyndham Survey on The Loop between November 2020 and January 2021
- Participation in a series of Community Conversations held in February and March 2021

The findings from these different activities will support the drafting of a number of key strategic documents. These include the Annual Plan and Budget, the refreshed Wyndham 2040 Community Vision, Council Plan, Municipal Public Health and Wellbeing Plan and Long-Term Financial Plan.

This report is being provided as part of the Public Exhibition for the Proposed Annual Plan and Budget 2021/22.

Shaping Wyndham Survey

The Shaping Wyndham Survey asked community members for their thoughts on where Council should prioritise its resources and efforts over the next four years.

Through the Shaping Wyndham Survey, Council aimed to:

- hear community aspirations and priorities for Wyndham City and determine whether the vision statements in the Wyndham 2040 Community Vision are still relevant for Wyndham today; and
- gain an understanding as to where the community would like Council to focus resources and efforts over the next four years

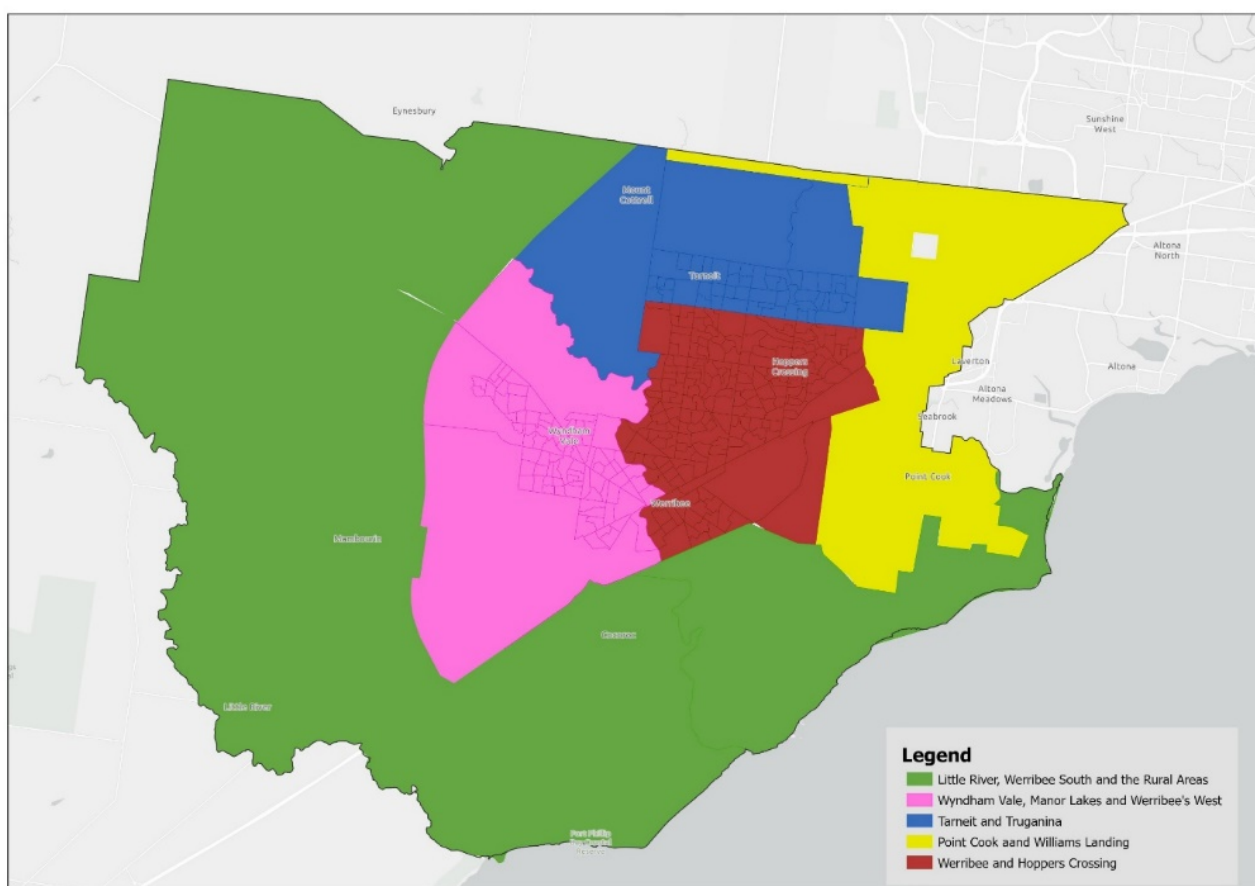
The survey was live on [The Loop](#), for a 67-day period from 19 November 2020 until Sunday 24 January 2021 and received a total of 140 responses.

Community Conversations

The Community Conversations brought together five groups of randomly selected people from five distinct places across Wyndham, who broadly represent the entire community. 135 community representatives were selected to participate in the community conversations. Throughout the community conversations, they learnt about Wyndham City, discussed different issues and agreed on a range of priorities that they want Council to focus on over the next four years.

The five places were:

- Werribee and Hoppers Crossing
- Point Cook & Williams Landing (including the Laverton Industrial District)
- Tarneit & Truganina (including parts of Mount Cottrell)
- Wyndham Vale, Manor Lakes & Werribee's west
- Little River, Werribee South and the rural areas (Quandong, Cocoroc, Mambourin, Mount Cottrell and Eynesbury).



Engagement Approach

The Loop, Wyndham City's online community engagement platform, provided the community with access to the Shaping Wyndham online survey as well as information about the Community Conversations. Several communication tools were used to promote both the Shaping Wyndham survey and Community Conversations to the Wyndham City community. A list of communication techniques can be found in the below table.

Table 1 – Communication techniques

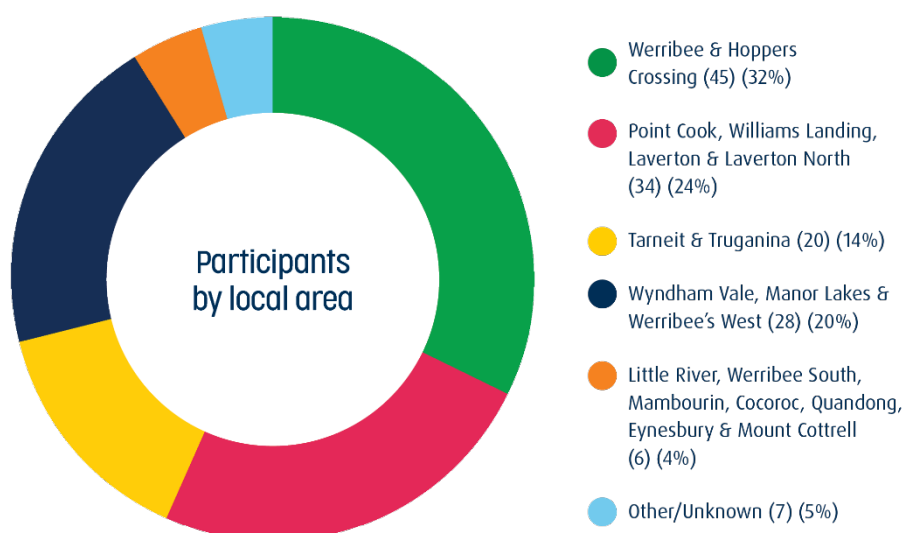
<i>Community Group</i>	Communication techniques
<i>Children 4- 12 years</i>	Direct email to the Kindergartens network
	Direct email to the Library network
	Library social media
<i>Youth</i>	Direct email to the Youth network
	Youth social media
<i>General Wyndham Community</i>	Wyndham social media
	Tailored social media posts for Councillors & CEO distribution
	Direct email to The Loop user database
	Direct email to Neighbourhood Hubs networks
	Wyndham News
	Wyndham Media Releases
<i>Aged and Disability</i>	Direct email to Wyndham Disability Support Network
<i>Diverse Communities</i>	Direct email via Neighbourhood Hub networks
	Direct email via Community Development networks
	Direct email via Indigenous and Torres Strait Islander networks
	Social Media posts in 8 languages

Community Engagement Outcomes

Shaping Wyndham Survey Findings Summary

Respondents

The survey was live for a 67-day period from 19 November 2020 until Sunday 24 January 2021 and received a response from a total of 140 people represented across the five different areas, as shown below:



Priorities by Theme

People and Community

In terms of priorities Council should focus on for the next four years, a total of 300 suggestions were received. The top responses related to:

- Service and programs (14% of all suggestions)
- Transport (14% of all suggestions)
- Infrastructure (13% of all suggestions)
- Safety (12% of all suggestions)

More specific responses for People and Community included:

- Increase the focus on aspects of diversity, accessibility and inclusion
- Increase the focus on aspects of health and wellbeing and related services
- Improve Council services
- Focus on connection and partnerships
- Community safety
- Improving community places and events
- Increased support for different sectors and groups
- Environment, sustainability and open space
- Health and wellbeing and sport
- Better infrastructure, roads and paths
- Better facilities
- Better transport and stations
- Embrace different types of housing
- Improve Council communication and engagement

Places and Spaces

In terms of priorities Council should focus on for the next four years, a total of 251 suggestions were received. The top responses related to:

- Natural environment / open spaces (23% of all suggestions)
- Transport (19% of all suggestions)
- Growth/development (15% of all suggestions)

More specific responses for Places and Spaces include:

- Focus on sustainability and nature
- Focus on community places
- Improved transport
- Implementation and Council performance.
- Infrastructure, roads and paths
- Facilities
- Housing
- Community
- Importance of parks, trees and green space
- Cycling and walking
- Housing and heritage
- Improved roads and infrastructure
- Improved facilities

Earning and Learning

In terms of priorities Council should focus on for the next four years, a total of 160 suggestions were received. The top responses related to:

- Schools/education (33% of all suggestions)
- Economy (18% of all suggestions)
- Jobs (17% of all suggestions)

More specific responses for Earning and Learning include:

- More and better schools and education options
- Support for local business and community
- Business and commercial areas and opportunities
- Better shops
- Local employment
- Implementation of vision
- Greater choice of universities and TAFEs
- Support for local employment and businesses
- Increased options and diversity of shops and dining
- Develop business hubs
- Council performance
- Employment

Leadership and Participation

In terms of priorities Council should focus on for the next four years, a total of 145 suggestions were received. The top responses related to:

- The role of Council in community engagement (23% of all suggestions)
- General expectations for Council's role (23% of all suggestions)
- Service and programs (13% of all suggestions)

More specific responses for Leaders and Participation include:

- Listen to the local community
- Ensure implementation
- Improve Council services
- Support for certain services and groups
- Support for volunteers
- Improved and innovative ways of engaging with community
- Foster connection and volunteering
- Council accountability
- Improved community leadership
- Local advocacy

Other feedback

In addition to asking about what Council should prioritise over the next four years, the survey also gave respondents an opportunity to provide other feedback. A total of 89 additional pieces of feedback were received. The top responses related to:

- General expectations for Council's role (12% of all suggestions)
- Growth/development (12% of all suggestions)
- The role of Council in community engagement (11% of all suggestions)

Appendix 1 included more detailed findings from the Shaping Wyndham Survey.

Community Conversations Findings Summary

The Placed Based Community Priorities have been identified and agreed to by the community conversation representatives of each group. They are in priority order.

Werribee and Hopper Crossing:

	Priority
1	Roadworks: Ease congestion. Invest in / improve roads, shared paths, footpaths (and maintenance thereof). Create more frequent and active transport options
2	Improve public open spaces: Revegetation planning, re-populating natural spaces, tree planting. Maintaining the ratio of green space to development. Improve mental health and wellbeing through green spaces
3	Create local employment opportunities: Invest in volunteering opportunities and business supports
4	Improve security and safety: More police, ambulance and security services
5	Improve local education opportunities
6	Create / improve community hubs: Cater for people with disability, 'aged care' and needing employment pathways. Providing culturally diverse activities and promoting them, addressing racism.
7	Better community engagement: More events like this and more contact from Council - Bring back 'Wyndham News'
8	Advocate for specialist services in local hospitals (Werribee Mercy Hospital)
9	Creating age specific (12-18yo) activities for young people
10	Create a 'wow-factor' /gateway treatment/ arts precinct for Wyndham, tourist destination, beautify Wyndham.



Werribee & Hoppers Crossing Community Conversations group

Point Cook and Williams Landing (including the Laverton Industrial District):

	Priority
1	Ensure sustainable community building, providing 20-minute neighbourhoods and safe pedestrian and public transport access and community facilities (all through improved planning)
2	Take the lead on climate / environmental action, increasing tree canopy and grassland protection. Focusing on protecting the natural environment and biodiversity
3	Support for local businesses, which generate local jobs and draw on local expertise and support for local start ups: <ul style="list-style-type: none"> Local business start-up support
4	Create / advocate for more high-quality schools. Ensure they have better resources and cater for disability and additional needs and lifelong learning
5	Improve / invest in indoor sports facilities and more adult outdoor gyms
6	Improve public health in immediate term. Improve local hospital access and building more hospitals and medical facilities.
7	More bus routes within Point Cook
8	Better integration of busses and trains with more train stations and station parking
9	Form a sub-committee from each Council ward to assist with Councillor decisions. Council to improve communications



Point Cook & Williams Landing (including the Laverton Industrial District) Community Conversations group

Little River, Werribee South and Rural Areas of Wyndham:

	Priority
1	Improve public and active transport (including walking and cycling paths) to connect communities.
2	Promote, maintain and improve the character of our open spaces and environmental corridors and green wedge. Educate about the value of green and clean spaces.
3	Eliminate homelessness in Werribee: <ul style="list-style-type: none"> • Provide facilities for people experiencing homelessness including services.
4	Encourage, mentor and guide youth through education and stewardship into local work.
5	Help re-skill and up-skill mature aged unemployed people.
6	Tourism must be prioritised, more festivals, events and celebrate the many nationalities and talents. Push the country to coast element. Rebrand the Werribee image.
7	Protect market gardens/food bowl and promote our rural community. Honouring our primary producers, prioritising rural land for farming.
8	Upgrade local facilities in local communities.
9	Promote opportunities to bring communities together: <ul style="list-style-type: none"> • Community information forums- What's happening in the community? • Festivals and events.



Little River, Werribee South and Rural Areas Community Conversation group

Tarneit and Truganina:

	Priority
1	Public transport (car parking and buses on demand, including active transport)
2	Infrastructure ready in advance (Roads, schools, hospitals, community centres, emergency services)
3	Mental health programs for everyone
4	More public hospitals and specialist health services, including disability, mental health, emergency, aged care
5	Commercial hubs and business parks (supporting local business and supporting local jobs)
6	Entertainment and socialising activities (not just in shopping centres)
7	COVID-19 recovery program (including welfare, business, family financial support)
8	More green spaces (be more engaged with nature, activities for everyone, trees and parks)
9	<p>Accessibility to facilities (libraries, pools, community centres).</p> <ul style="list-style-type: none"> Awareness relating to access to information and communication (promoting the services and activities that are available). Proximity, extended opening hours and cost of council facilities.
10	<p>All-in-one community hub (libraries, cafes, pool, dancing classes, playground for younger children)</p> <ul style="list-style-type: none"> Activities for all ages Better branding and signage- consumer facing (What's the offer/ What's the purpose?) Better promotion and integration of services



Tarneit and Truganina Community Conversation group

Wyndham Vale, Manor Lakes and Werribee's West:

	Priority
1	Improving infrastructure planning and delivery (emergency access, roads, telecommunications and public transport)
2	Making more employment opportunities locally, across industry and other work stages and age groups
3	Safety (managing crime, new police station, secure children's crossings)
4	Education (local schools across stages, high quality tertiary options, public standards match private, more focus for years 9-12)
5	Focus on holistic mental health and welfare for everyone (more access to it and light shone on it). Promote quality and availability of local mental health services and properly trained mental health workers. Focus on prevention rather than cure.
6	'Access-for-everything' hospital no matter what you need
7	Focus on welfare (family violence, alcohol, drugs, victim support)
8	Expand on composting initiative to have more recycling, more responsible and sustainable waste management. (Free composting, green recycling at schools and across community including health centres etc.)



Wyndham Vale, Manor Lakes and Werribee's West Community Conversation group

Overarching Combined Outcomes

The overarching combined outcomes from the Shaping Wyndham Survey and Community Conversation are summarised below:

- Increased focus green and open spaces
- Investment in arts and culture
- Strong focus on environment, sustainability and climate change
- Desire for 20 minute neighbourhoods
- Importance of community infrastructure
- Support and need for local jobs and businesses
- Education is still important
- Essential services continue to be important
- Investment in hospitals and other health services
- Concern around the sequencing of growth
- Congestion, public transport and moving around the city continue to be issues
- Need for improved communication and community engagement
- Improved amenity and beautification

Summary of Proposed Annual Plan and Budget 2021/22

The 2021/22 Proposed Annual Plan and Budget presents a vision for Wyndham that will help us rebound from the COVID-19 pandemic and build a stronger future for our community. It is a responsible and considered budget that delivers a record capital works investment, protects and enhances our local environment, builds healthy and resilient communities, and maintains the essential services that residents have told us they need and want.

The Budget will invest in Wyndham's largest capital works program ever, with around \$201 million allocated to ensure that significant infrastructure is delivered across the city. It provides a clear direction for Council as we emerge from the pandemic, with financial sustainability and responsible investment in the key priorities.

The Proposed Annual Plan and Budget for 2021/22 outlines a \$201 million capital works spend, alongside an operating revenue of \$374.78 million (excluding developer contributions, non-monetary assets, capital grants and net loss on disposal of property, infrastructure, plant and equipment) and operating expenditure of \$306.70 million (excluding depreciation and amortisation) to deliver over 60 different services to the people who live, work and visit the city.

Next Steps

The public exhibition of the Proposed Annual Plan and Budget 2021/22 is open from 28 April 2020 to 19 May 2021.

Opportunities for feedback are available via:

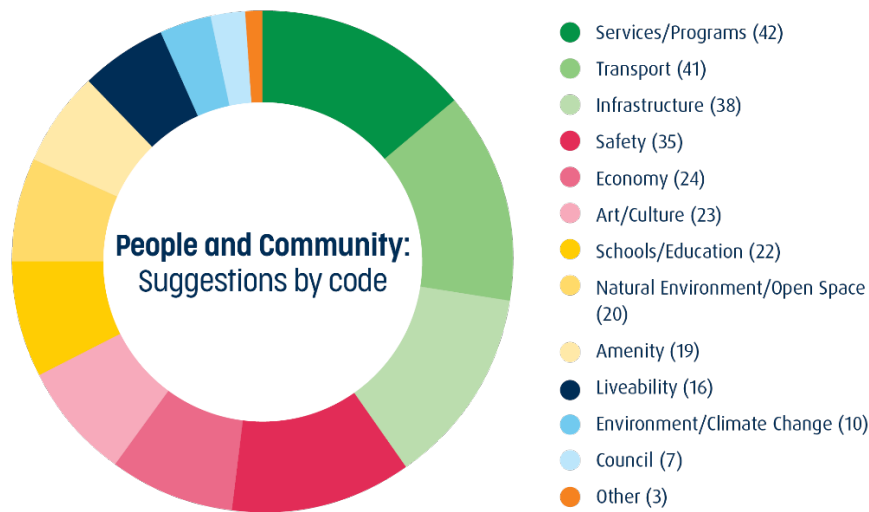
- Online via <https://theloop.wyndham.vic.gov.au/budget>

Thank you to all the members of the Wyndham community who have contributed ideas for the Proposed Annual Plan and Budget 2020/21.

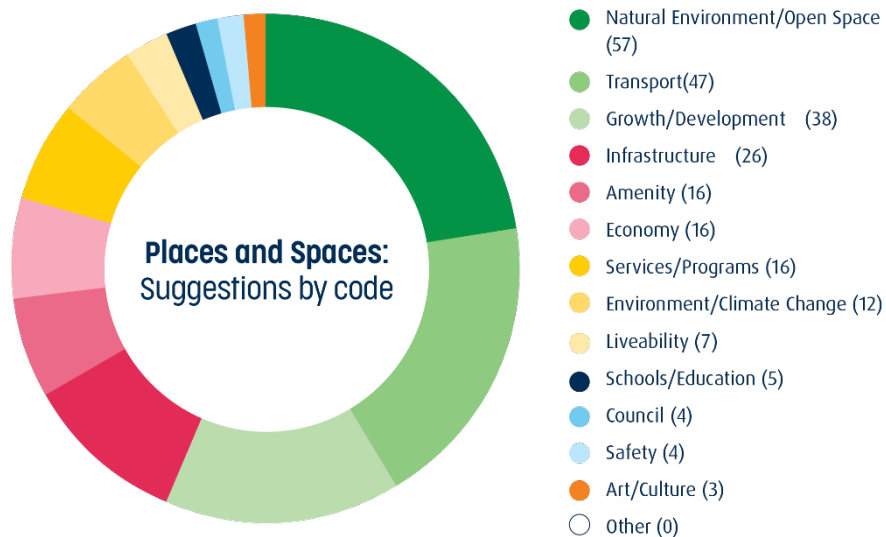
Appendix 1 – Shaping Wyndham Survey detailed findings

Priorities by Theme

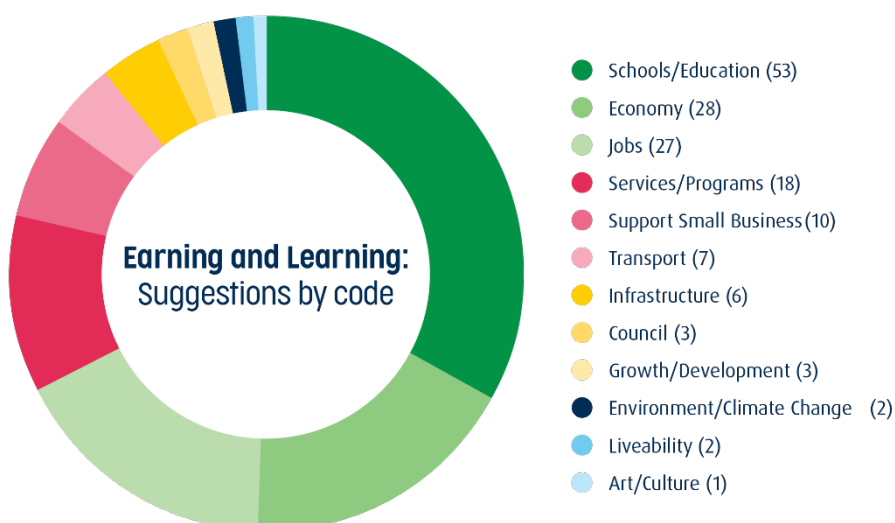
People and Community



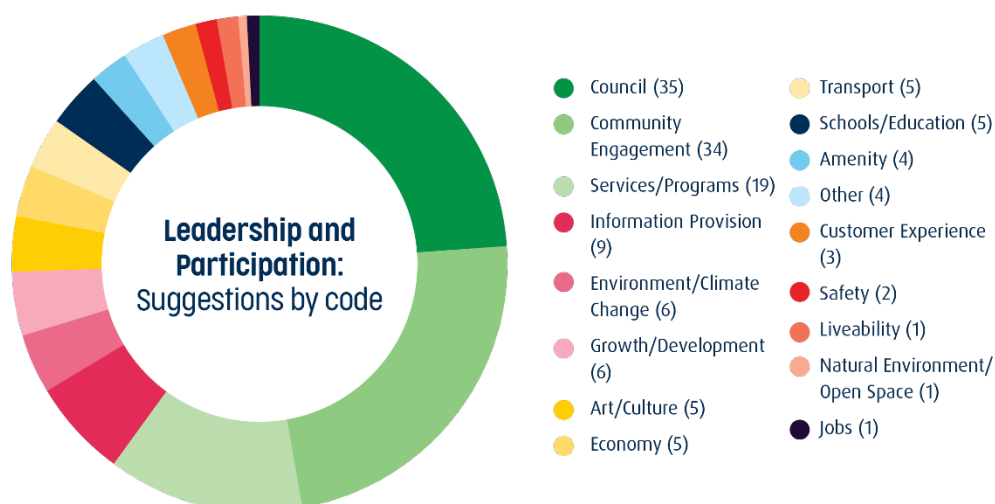
Places and Spaces



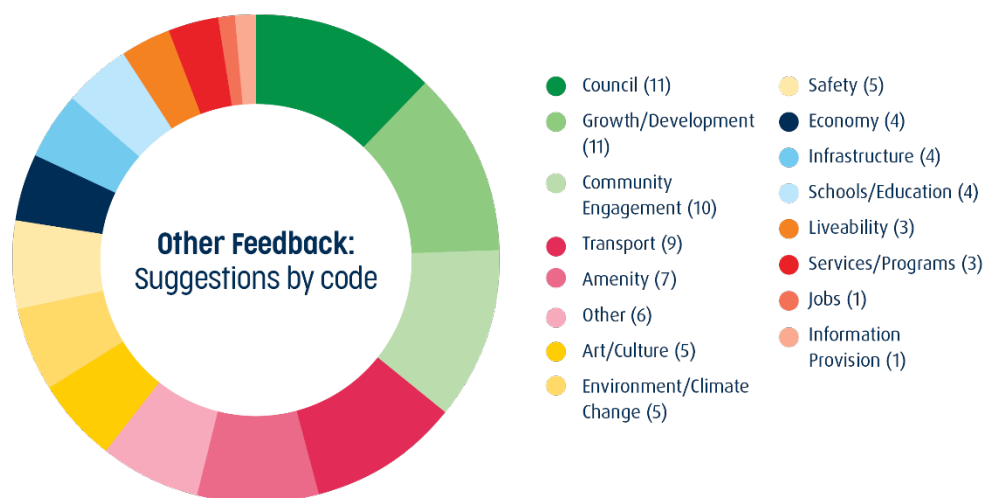
Earning and Learning



Leadership and Participation



Other feedback



Appendix 2 – Community Conversations combined View of Priorities

The following table presents a combined view of the priorities areas identified by community groups at their Community Conversations held in February and March 2021.

Priority	Category	Theme	District
'Access-for-everything' hospital no matter what you need. Advocate for specialist services in local hospitals (Werribee Mercy Hospital). Improve public health in immediate term. Improve local hospital access and building more hospitals and medical facilities. More public hospitals and specialist health services, including disability, mental health, emergency, aged care.	Services / programs	People and Community	<ul style="list-style-type: none"> - Point Cook/Williams Landing - Tarneit and Truganina - Werribee/Hoppers Crossing - Wyndham Vale, Manor Lakes & Werribee West
<p>Improve local education opportunities.</p> <p>Create / advocate for more high-quality schools. Ensure they have better resources and cater for disability and additional needs and lifelong learning.</p> <p>Education (local schools across stages, high quality tertiary options, public standards match private, more focus for years 9-12).</p> <p>Encourage, mentor and guide youth through education and stewardship into local work.</p>	Schools/ education	Earning and Learning	<ul style="list-style-type: none"> - Point Cook/Williams Landing - Werribee/Hoppers Crossing - Wyndham Vale, Manor Lakes & Werribee West - Little River, Werribee's South and Rural areas
Form a sub-committee from each Council ward to assist with Councillor decisions. Council to improve communications. Better community engagement: More events like this and more contact from Council - Bring back 'Wyndham News'. Awareness relating to access to information and communication (promoting the services and activities that are available).	Council	Leadership and Participation	<ul style="list-style-type: none"> - Point Cook/Williams Landing - Werribee/Hoppers Crossing - Tarneit and Truganina
Improve public open spaces: Revegetation planning, re-populating natural spaces, tree planting. Maintaining the ratio of green space to development. Improve mental health and wellbeing through green	Natural environment / open space	Places and Spaces	<ul style="list-style-type: none"> - Werribee / Hoppers Crossing - Tarneit and Truganina

spaces. More green spaces (be more engaged with nature, activities for everyone, trees and parks). Promote, maintain and improve the character of our open spaces and environmental corridors and green wedge. Educate about the value of green and clean spaces.			- Little River, Werribee's South and Rural areas
Create local employment opportunities: Invest in volunteering opportunities and business supports. Making more employment opportunities locally, across industry and other work stages and age groups. Help re-skill and up-skill mature aged unemployed people.	Economy	Earning and Learning	- Werribee / Hoppers Crossing Wyndham Vale, Manor Lakes & Werribee West - Little River, Werribee's South and Rural areas
More bus routes within Point Cook. Better integration of buses and trains with more train stations and station parking. Public transport (car parking and buses on demand, including active transport). Improve public and active transport (including walking and cycling paths) to connect communities.	Transport	Places and Spaces	- Point Cook/Williams Landing Tarneit and Truganina - Little River, Werribee's South and Rural areas
Improve security and safety: More police, ambulance and security services. Safety (managing crime, new police station, secure children's crossings).	Safety	People and Community	- Werribee / Hoppers Crossing - Wyndham Vale, Manor Lakes & Werribee West
Create / improve community hubs: Cater for people with disability, 'aged care' and needing employment pathways. Providing culturally diverse activities and promoting them, addressing racism. All-in-one community hub (libraries, cafes, pool, dancing classes, playground for younger children): - Activities for all ages - Better branding and signage - consumer facing (what's the offer/what's the purpose?) - Better promotion and integration of services.	Services / programs	People and Community	- Werribee / Hoppers Crossing - Tarneit and Truganina

Support for local businesses, which generate local jobs and draw on local expertise and support for local start-ups. Commercial hubs and business parks (supporting local business and supporting local jobs).	Economy	Earning and Learning	- Point Cook/Williams Landing - Tarneit and Truganina
Infrastructure ready in advance (Roads, schools, hospitals, community centres, emergency services). Improving infrastructure planning and deliver (emergency access, roads, telecommunications and public transport).	Growth / development	Places and Spaces	- Tarneit and Truganina - Wyndham Vale, Manor Lakes & Werribee West
Mental health programs for everyone. Focus on holistic mental health and welfare for everyone (more access to it and light shone on it). Promote quality and availability of local mental health services and properly trained mental health workers. Focus on prevention rather than cure.	Services / programs	People and Community	- Tarneit and Truganina - Wyndham Vale, Manor Lakes & Werribee West
Create a 'wow-factor'/gateway treatment/ arts precinct for Wyndham, tourist destination, beautify Wyndham. Tourism must be prioritised, more festivals, events and celebrate the many nationalities and talents. Push the country to coast element. Rebrand the Werribee image. Promote opportunities to bring communities together: - Community information forums - What's happening in the community? - Festivals and events.	Arts / culture	Earning and Learning	- Werribee / Hoppers Crossing - Little River, Werribee's South and Rural areas
Roadworks: Ease congestion - Invest in / improve roads, shared paths, footpaths (and maintenance thereof). Create more frequent and active transport options.	Transport	Places and Spaces	- Werribee / Hoppers Crossing
Creating age specific (12-18yo) activities for young people.	Services / programs	People and Community	- Werribee / Hoppers Crossing
Ensure sustainable community building, providing 20-minute neighbourhoods and safe pedestrian and public transport access and community facilities (all through improved planning).	Growth / development	Places and Spaces	- Point Cook/Williams Landing

Take the lead on climate / environmental action, increasing tree canopy and grassland protection. Focusing on protecting the natural environment and biodiversity.	Environment / climate change	Places and Spaces	- Point Cook/Williams Landing
Improve / invest in indoor sports facilities and more adult outdoor gyms.	Infrastructure	Places and Spaces	- Point Cook/Williams Landing
Entertainment and socialising activities (not just in shopping centres).	Growth / development	People and Community	- Tarneit and Truganina
COVID-19 recovery program including welfare, business, family financial support.	Economy	Earning and Learning	- Tarneit and Truganina
Accessibility to facilities (libraries, pools, community centres).	Infrastructure	Places and Spaces	- Tarneit and Truganina
Proximity, extended opening hours and cost of council facilities.	Services / programs	People and Community	- Tarneit and Truganina
Focus on welfare (family violence, alcohol, drugs, victim support).	services / programs	People and Community	- Wyndham Vale, Manor Lakes & Werribee West
Expand on composting initiative to have more recycling, more responsible and sustainable waste management. (Free composting, green recycling at schools and across community including health centres etc.)	Services / programs	Earning and Learning	- Wyndham Vale, Manor Lakes & Werribee West
Protect market gardens/food bowl and promote our rural community. Honouring our primary producers, prioritising rural land for farming.	Growth / development	Places and Spaces	- Little River, Werribee's South and Rural areas
Eliminate homelessness in Werribee: Provide facilities for people experiencing homelessness including services.	Services / programs	People and Community	- Little River, Werribee's South and Rural areas
Upgrade local facilities in local communities.	Infrastructure	Places and Spaces	- Little River, Werribee's South and Rural areas