

Western Plains South Green Wedge Background Reports

Bulletin #1
May 2018

The City of Wyndham and City of Melton together are in the first stages of jointly preparing Management Plans for the Western Plains South Green Wedge (WPSGW). The Management Plans will provide a framework to support sustainable land use, land management, and sustainable development of the WPSGW. As the WPSGW is spread over two municipalities, ultimately two Management Plans will be prepared. However, future use and development of the WPSGW will be guided by a single vision and shared principles and underpinned by Background Reports for each municipality. The plans will be developed in five stages and we are currently in Stage 2.

We are here



The extent of the study area is highlighted in the map by the red outline. Whilst the Background Reports focuses on land within the study area, they also consider the role and influence of major current and future land uses surrounding the study area. Note that the boundaries of the darker shaded areas, including the Western Grasslands Reserve, Eynesbury township and the Urban Growth Boundary are fixed and will not be reviewed by this study.

Have Your Say!

We are holding community drop in sessions to provide an opportunity for the community to provide input into the project, find out more information or to speak to a member of the project team in person. You are invited to attend one of four drop in sessions to be held during May 2018. The sessions will run for 3 hours and members of the community are welcome to 'drop-in' at any point during the session. Members of the consulting team and representatives of both Councils will be in attendance. Your input is valued and will assist in gaining greater understanding of the opportunities and constraints of the WPSGW.

Drop in Sessions

City of Wyndham	City of Melton
Werribee Civic Centre 45 Princes Hwy, Werribee Conference Room C and D Tuesday 22 May, 11.30am - 2.30pm	Melton Library and Learning Hub 31 McKenzie St, Melton Tuesday 22 May, 5pm - 8pm
Little River Mechanics Institute Hall 8 Rothwell Road, Little River Thursday 24 May, 5pm - 8pm	Eynesbury Discovery Centre 481 Eynesbury Rd, Eynesbury Thursday 24 May, 11.30am - 2.30pm

Background Reports

Copies of the draft Background Reports are available from:

Wyndham City Council, 45 Princes Hwy Werribee
Melton City Council, 232 High St, Melton

Online:

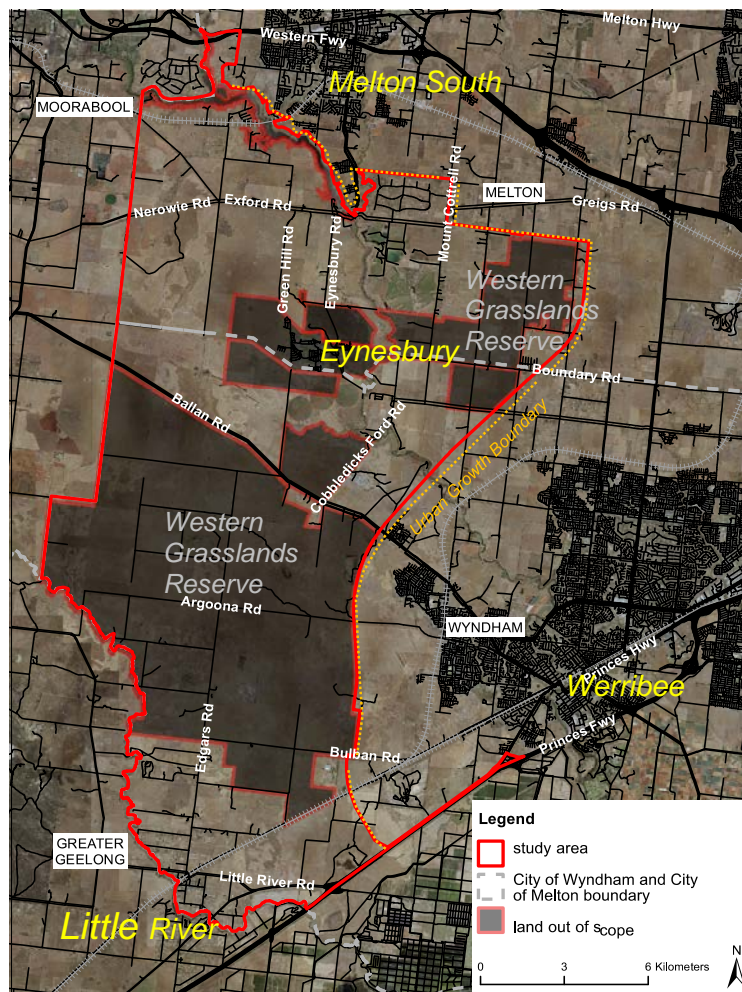
Wyndham: <https://theloop.wyndham.vic.gov.au/>
Melton: melton.vic.gov.au/WPSGWMP

Feedback

Feedback on the draft Background Reports should be made in writing by **Friday 8 June**.

Email to: citysupport@melton.vic.gov.au
or
mail@wyndham.vic.gov.au

Mail to: Wyndham City Council
PO Box 197 WERRIBEE 3030
or
Melton City Council
PO Box 21 MELTON VIC 3337



Further Information

For further details about the project contact Sam Freeman-Moir, Wyndham City Council on 9742 0777 or Don Lewis, Melton City Council on 9747 7200.