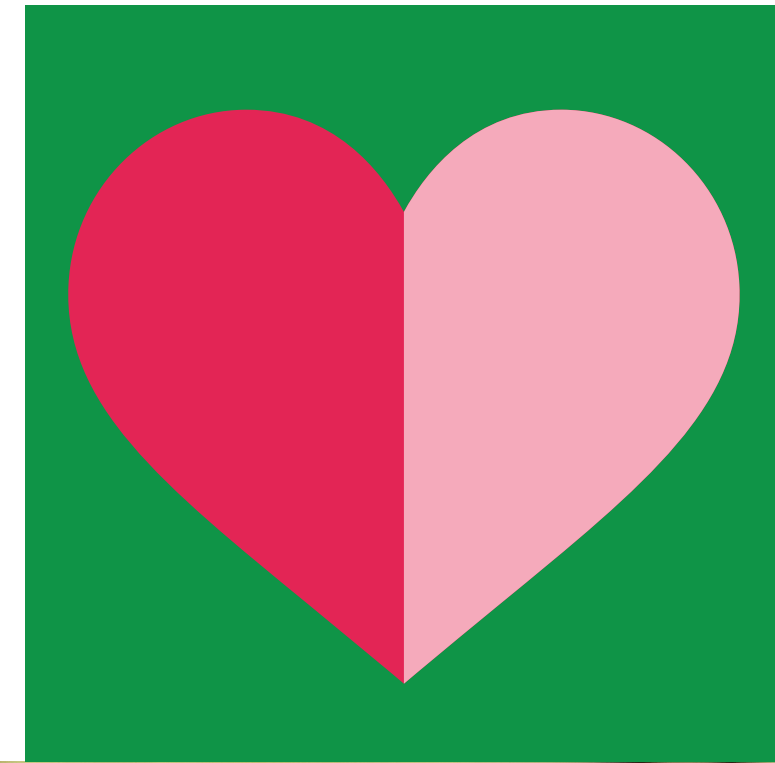


# Wyndham 2040 Community Vision

Theme: People and Community



*Wyndham will be a family friendly city. Relationships between family members will be strong.*

*The people of Wyndham will be connected to each other. Our communities will be welcoming. We will be known for listening to and learning from the diversity of all residents. Wyndham will celebrate culture and art. We will share stories that challenge and inspire.*

*We will acknowledge the Aboriginal heritage of the land.*

*The country beginnings of our towns and shire will be remembered.*

*Wyndham residents will have opportunities to stay fit and healthy. Services for health will be easily accessed and delivered at a high standard. Community members will be confident and part of caring neighbourhoods.*



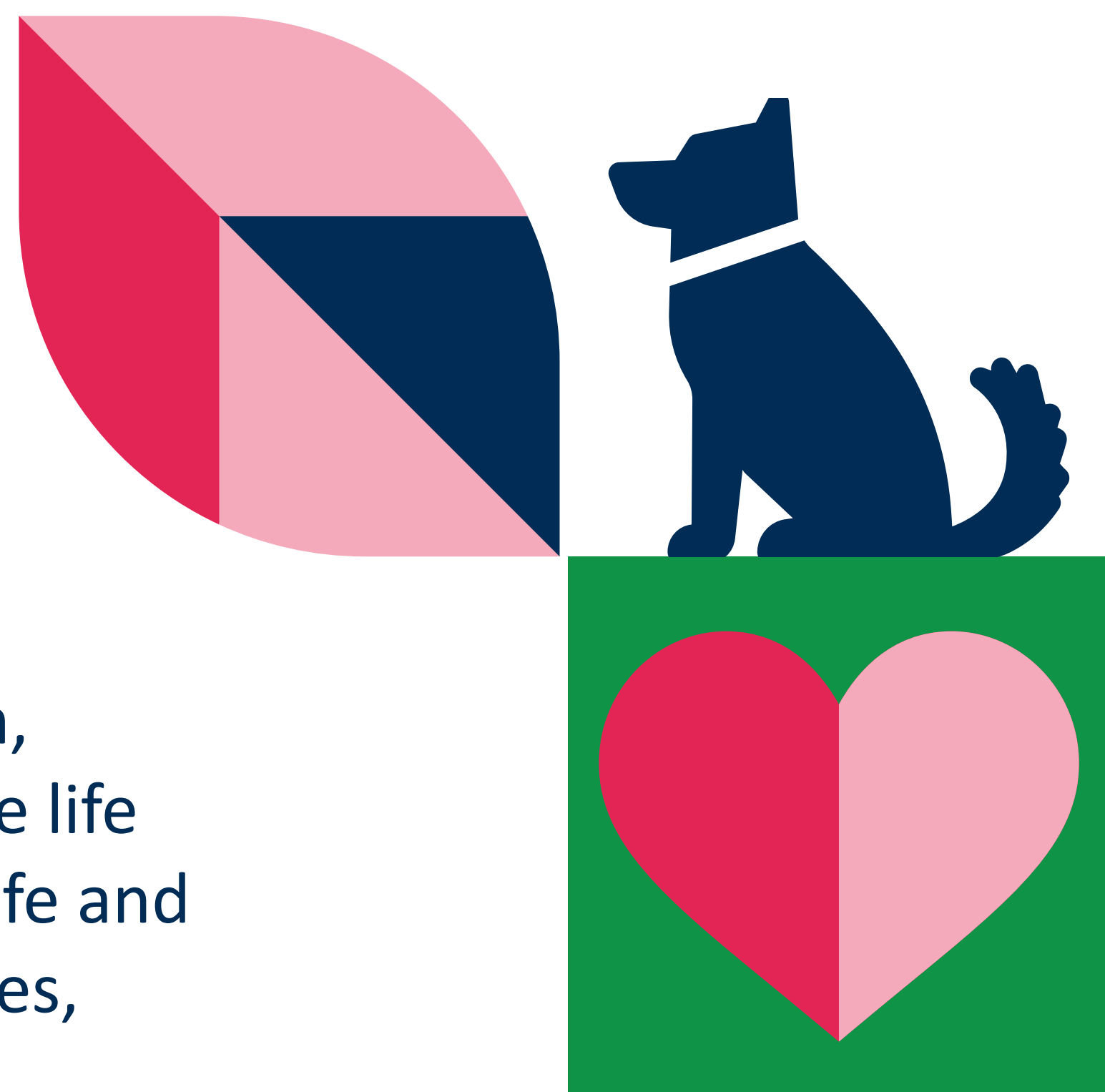




# People & Community

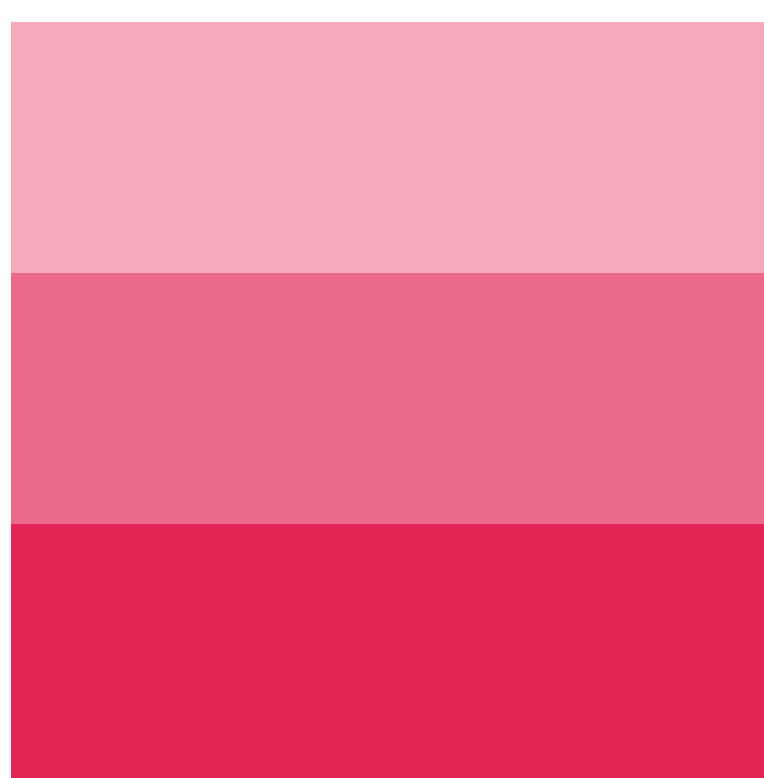
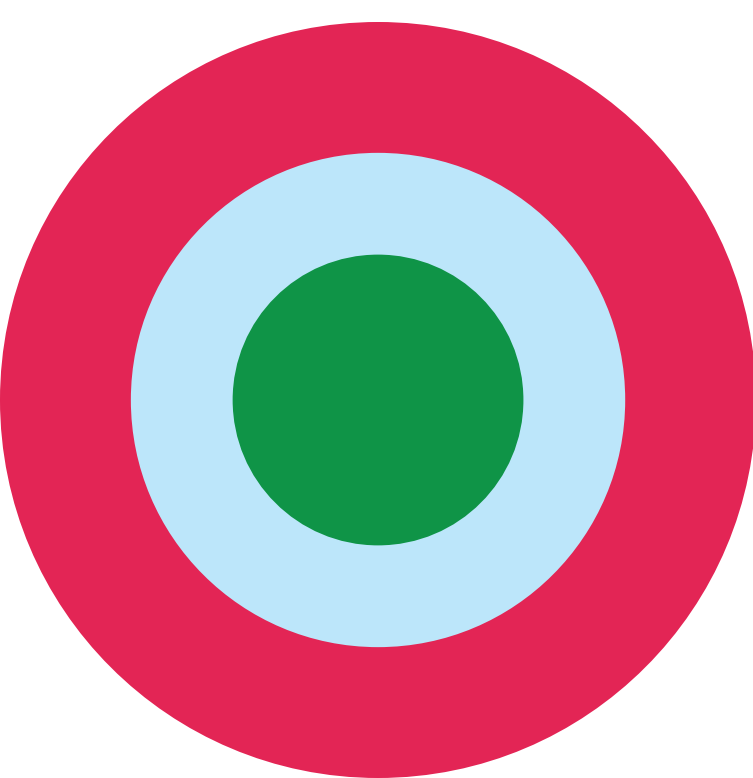
## Council Services

Under this theme, Council delivers services relating to the health, wellbeing and safety of all members of our community across the life stages. Council also works to ensure Wyndham is an inclusive, safe and welcoming city, which celebrates our diverse heritage and cultures, and helps residents to stay healthy, active and connected.



## Specific services delivered by Council include:

- Aged and Disability
- Animal Management
- Arts & Culture
- Civic Compliance
- Community Development & Resourcing
- Community Infrastructure Planning
- Community Wellbeing & Inclusion
- Customer Service
- Early Education & Care
- Environmental Health Services
- Family & Sector Partnerships
- Festivals & Events
- Integrated Service Planning & Reform
- Maternal Child Health & Wellness
- Municipal Emergency Management
- School Crossings
- Sport Recreation & Physical Activity
- Youth



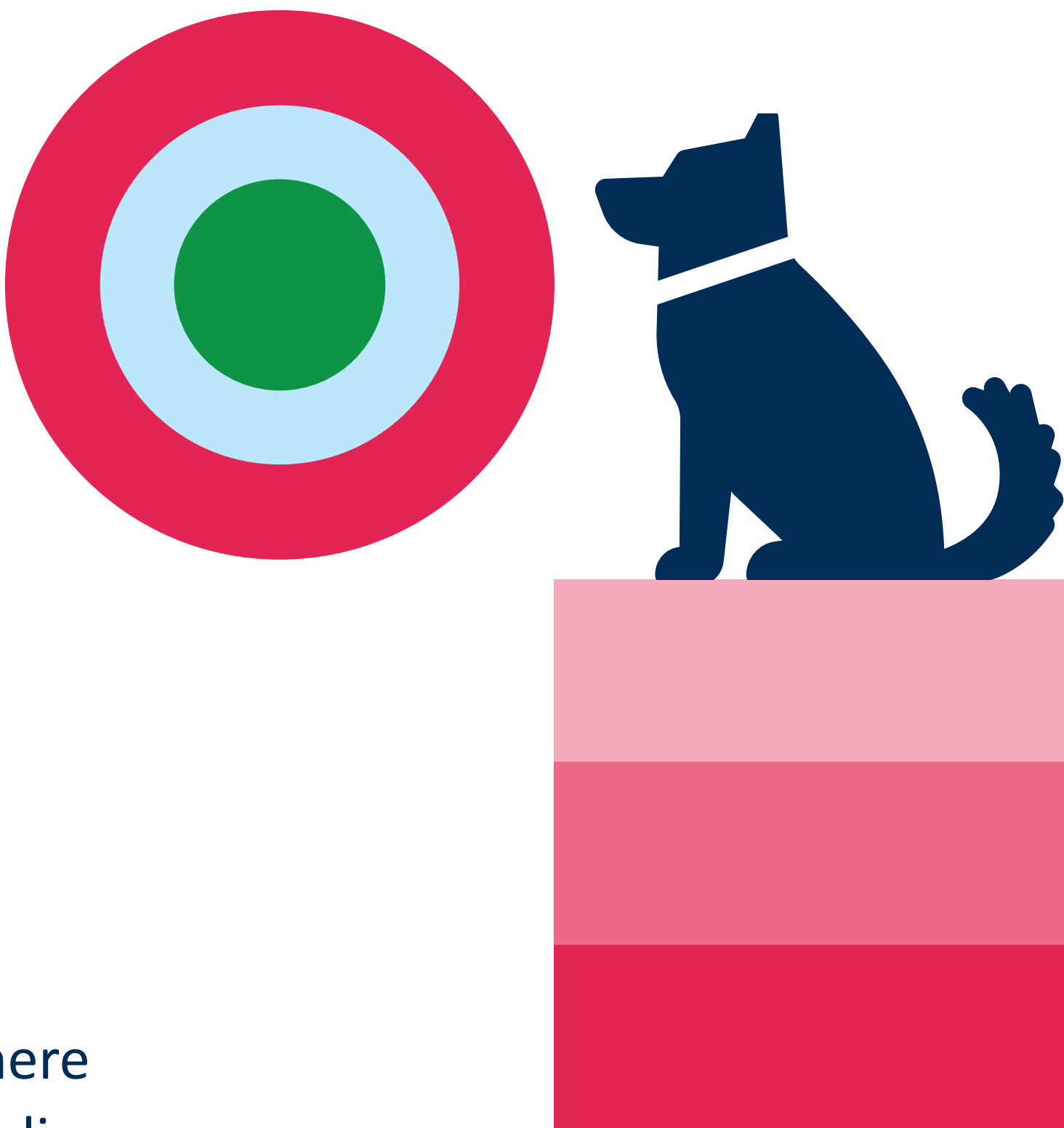
# Challenges & Opportunities

## People and community

A variety of challenges and issues are facing Wyndham in 2020 and beyond.

As outlined in Wyndham City’s Advocacy Strategy, Securing Wyndham’s Future, Council is largely reliant on other levels of government to fund and provide the infrastructure and services our community needs to prosper.

- Between 2013 and 2018, Wyndham experienced the third largest population growth across Australia, and the largest in Victoria, adding over 65,000 people in that time.
- Services need to be located where they’re needed most – and funding needs to be made available so that they’re up and running when our families and children need them.



### To meet our 2040 Vision for People and Community:

We need	Because
New early childhood education and care facilities, public paediatric health services, and family support centres including long-term funding for kindergarten.	Services need to be located where they’re needed most – and funding needs to be made available so that they’re up and running when our families and children need them.  Over the next 20 years an extra 220,000 will call Wyndham home. The age groups with the greatest growth rates will be the 0-14 and the 25-44 year age groups.
Pokies and other gambling reform.	Every year in Wyndham more than \$100 million is lost to one of Wyndham’s 13 gaming venues.
Support for our local arts sector from state and federal governments to recover and continue to thrive.	Our local arts sector is crucial to liveability in Wyndham. The sector has been hit hard by the COVID-19 crisis and national funding has been declining.
Federal and state government support for an active sports and recreation culture.	Sporting and recreational facilities promote physical activity and bind our community together. Participation promotes social inclusion, healthy child development, and helps with anti-social behaviour.
Support for people from non-English speaking backgrounds to access community services.	More than half (53%) of Wyndham residents were born overseas and there are more than 120 languages spoken across the municipality.
Support for Asylum Seekers, including the Status Resolution Support Services (SRSS) program.	This program supports people who have escaped extremely dangerous situations to seek asylum in Australia by providing them with language and psychological support, medicine, food and critical job-seeking assistance.
Ongoing support from the state and federal governments as we adapt to a changing world post COVID-19 pandemic.	The longer-term impacts of COVID-19 on our community health and wellbeing are not yet clear.