

# Wyndham 2040 Community Vision

Theme: Places and Spaces



## Our Vision for Places and Spaces

*Wyndham's transport system will be efficient. People will be able to move around Wyndham easily. There will be more ways to connect to greater Melbourne.*

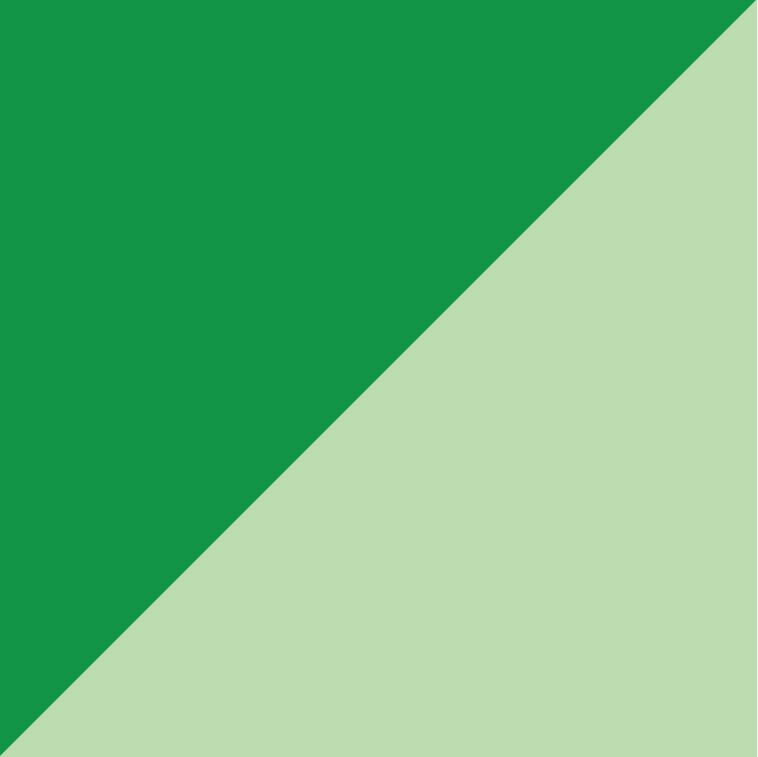
*Our natural environment will be respected, preserved and protected.*

*Our city will offer a diverse range of housing types and built environments that contribute to the quality of life of residents at all ages.*

*Our parks and open spaces will connect people with the outdoors and each other. They will be activated and inviting destinations for residents and visitors.*







# Places & Spaces

## Council Services

Under this theme, Council delivers services relating to the built and natural environments in which our community lives. Council works with its partners to build a City that offers a diverse range of housing and infrastructure such as community centres, parks and, and natural open spaces so that people in Wyndham enjoy healthy environments that promote happy and active lives.



## Specific services delivered by Council include:

- Asset Management
- Building Services
- Community Cultural Facilities Management
- Conservation & Arboriculture
- Facilities Management
- Kerbside Waste Collection Service
- Long Term Planning & Design
- Natural Environment & Urban Forestry
- Open Space Creation
- Open Space Management
- Road & Amenity Maintenance
- Road Design & Construction
- Spatial Systems
- Strategic Property Portfolio Management
- Strategic Waste and Sustainability Planning
- Subdivisions
- Town Planning
- Traffic Management
- Transport Planning
- Water & Coastal Governance



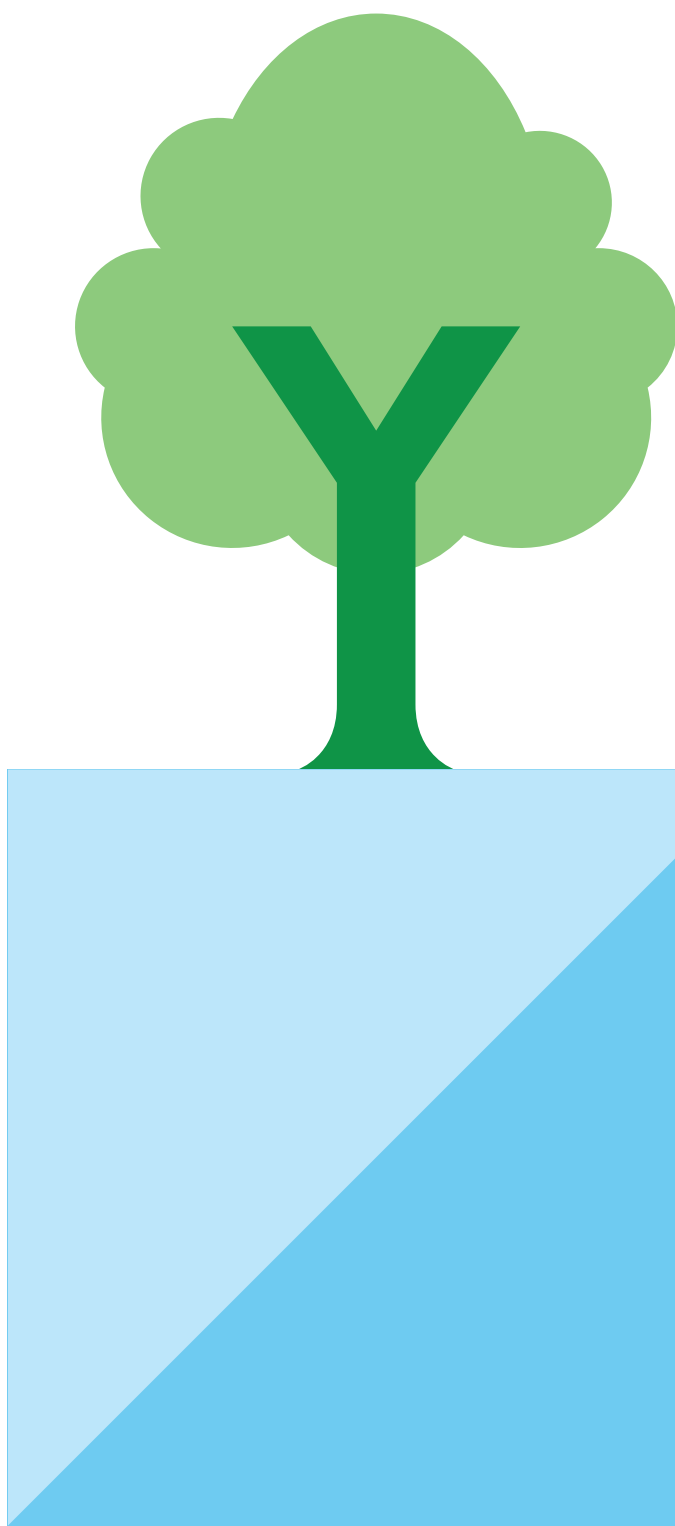
# Challenges & Opportunities

## Places and Spaces

A variety of challenges and issues are facing Wyndham in 2020 and beyond.

As outlined in Wyndham City’s Advocacy Strategy, Securing Wyndham’s Future, Council is largely reliant on other levels of government to fund and provide the infrastructure and services our community needs to prosper.

- Between 2013 and 2018, Wyndham experienced the third largest population growth across Australia, and the largest in Victoria, adding over 65,000 people in that time.
- A majority (62%) of Wyndham residents travel to work outside the municipality.
- Nearly one in five people spend more than 90 minutes per day in transit.



### To meet our 2040 Vision for Places and Spaces:

We need	Because
Access to quality public transport.	<p>We use our transport network to get to and from work, pick up the kids from school, do the shopping, and visit our friends and relatives.</p> <p>A network that lets us do these things quickly, safely and efficiently improves our individual wellbeing and helps our community prosper.</p>
Investment in road and railway infrastructure.	Many sections of Wyndham’s roads have reached capacity, and some are carrying far more traffic than they were designed for. We need to unclog our road network and get Wyndham moving.
Additional train capacity on the Regional Rail Link.	Trains are regularly overcrowded and there are not enough stations. This means our residents are more reliant on their cars – this causes road congestion and overflowing car parks around train stations.
New and more frequent bus services for residents in Tarneit, Wyndham Vale, Manor Lakes, Truganina and Point Cook.	These suburbs have large numbers of people living in new estates that have poor or no access to public transport.
Pedestrian and cycling infrastructure.	59% of households in Wyndham have access to two or more vehicles. Better linking transport connections will provide more economically and environmentally sustainable outcomes for Wyndham.
Ongoing funding towards infrastructure projects.	The fastest growing regions of Melbourne need vital community infrastructure to support the needs of their communities.
A new approach to urban development that allows for the early rollout of infrastructure and services.	People are moving into new housing estates before infrastructure and services are properly in place, creating social isolation, long commutes, and poor access to basic services like schools, parks, community centres and health clinics).
Long-term partnerships with land managers and the Victorian Government to support our coastal communities and environments.	<p>Wyndham has significant environmental assets that feature rare flora and fauna, expansive grasslands, natural coastline, sites of international migratory importance and unique waterways and wetlands which need to be protected.</p> <p>Climate change is happening and we need to understand how it will affect us.</p>