

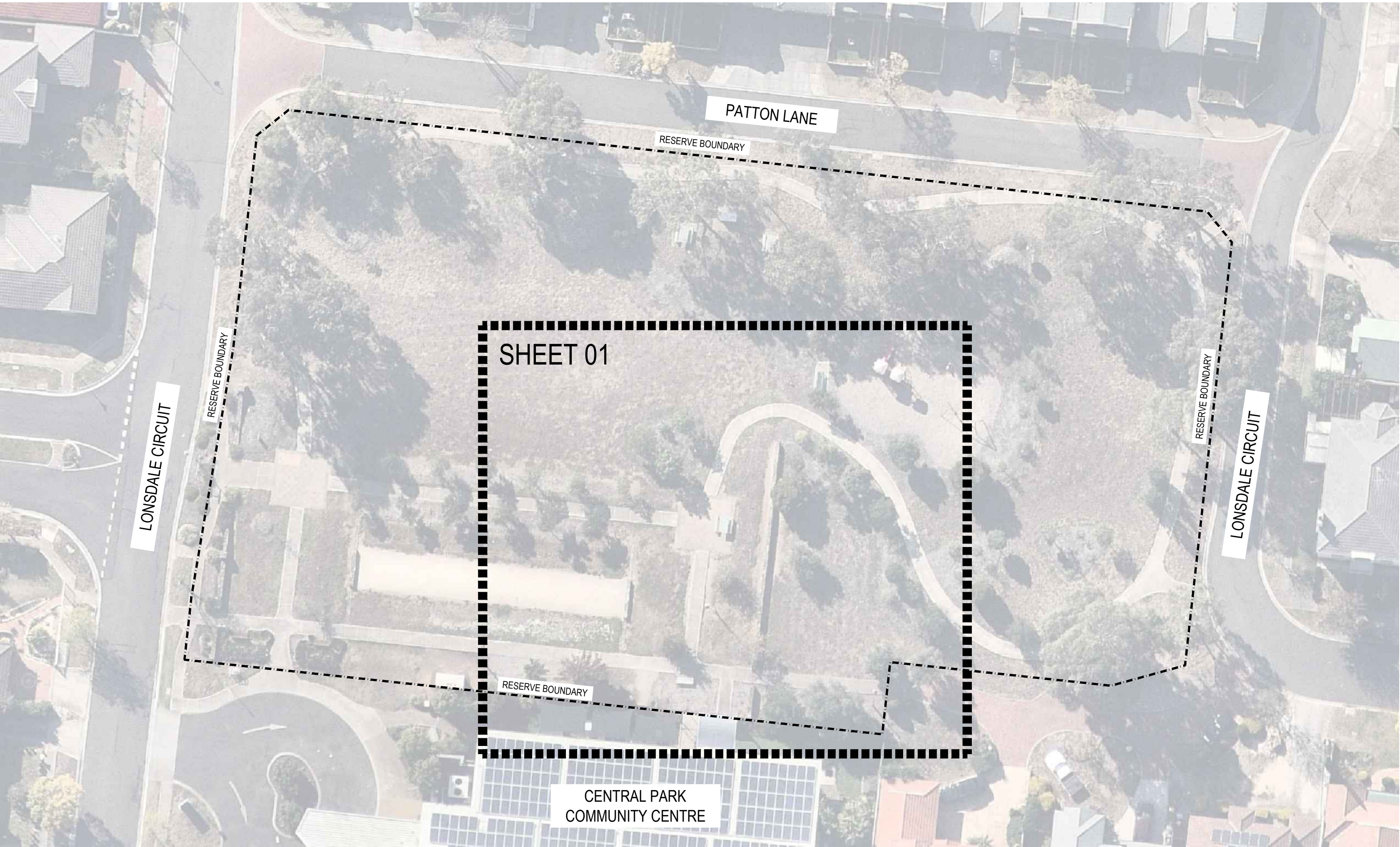
CENTRAL PARK - SENIOR EXERCISE PARK

STAGE ONE - LANDSCAPE WORKS

HOPPERS CROSSING

- NOTES
1. The location of existing services is to be verified on site prior to the commencement of works.
 2. The Contractor shall not alter or cause damage to existing vegetation unless directed by the Superintendent in writing to remove or alter.
 3. The tree protection envelope must be constructed prior to the commencement of works and must not be removed until the completion of the development.
 4. Set out to be confirmed onsite by the Superintendent prior to construction.
 5. All dimensions are in millimetres.
 6. Written dimensions take precedence over scale.

KEY PLAN



MELWAY REF: 206 J2

DRAWING SHEET LIST

| DWG NO. | DRAWING TITLE |
|---------|---------------------------|
| L-000 | COVER SHEET AND LEGEND |
| L-001 | LANDSCAPE STAGING PLAN |
| L-002 | DEMOLITION PLAN |
| L-003 | FINISHES PLAN |
| L-004 | SETOUT PLAN |
| L-005 | LANDSCAPE DETAILS SHEET 1 |
| L-006 | LANDSCAPE DETAILS SHEET 2 |

OVERALL LEGEND

STAGING LEGEND

- STAGE ONE WORKS
WORKS TO BE COMPLETED AS
PART OF INITIAL STAGE
- FUTURE STAGES
WORKS TO BE COMPLETED AT
A LATER DATE

DEMOLITION LEGEND

- EXISTING TREE
TO BE RETAINED
- EXISTING TREE
TO BE REMOVED OR RELOCATED
REFER TO PLAN FOR SPECIFIC TREE
- EXISTING TREE
TO BE RELOCATED
REFER TO PLAN FOR SPECIFIC TREE
- EXISTING PARK FEATURES
TO BE RETAINED
- EXISTING PAVEMENT
TO BE REMOVED
- EXISTING FURNITURE
TO BE RELOCATED
- EXISTING DEMOLISHED SURFACE
AREA TO BE REINSTATED
AS PART OF FUTURE STAGE

SETOUT LEGEND

- SETOUT POINT
XY COORDINATES
298332442.2
5805296126.8
- INDICATIVE GRADING
OF SURFACE LEVEL
- DIMENSION
- FREE HEIGHT OF FALL
REFER TO MANUFACTURERS SPECIFICATION

FINISHES LEGEND

- PROPOSED TREE
E.G. Olea europaea
PROPOSED SPECIES TO FUTURE DETAIL
- PROPOSED CONCRETE PATH
- PROPOSED RUBBER SOFTFALL
PROPOSED COLOUR TO FUTURE DETAIL
- PROPOSED RUBBER SOFTFALL
PROPOSED COLOUR TO FUTURE DETAIL
- PROPOSED GARDEN BED
PROPOSED SPECIES MIX TO
FUTURE DETAIL
- PROPOSED MULCHED BED
- EXISTING LIGHT POLE
TO BE RETAINED
- PROPOSED SPADED EDGE
EDGING BETWEEN SOFTSCAPE SURFACES
- EXISTING SPADED EDGE
TO BE REINSTATED
- PROPOSED BENCH SEAT
WCC DEPOT TO SUPPLY BENCH SEAT
- PROPOSED PICNIC SETTING
RELOCATED FROM SITE
- PROPOSED SIGNAGE
INDICATIVE LOCATION TO FUTURE DETAIL
- PROPOSED EQUIPMENT FALL ZONE
REFER TO MANUFACTURERS DETAILS

| REV | DATE | ISSUE | DWN | CHK |
|-----|----------|------------------|-----|-----|
| 02 | 06.07.18 | FOR QUOTE | SL | PG |
| 01 | 14.06.18 | FOR CONSULTATION | SL | PG |
| 00 | 08.06.18 | DRAFT FOR REVIEW | SL | PG |

ISSUED FOR TENDER
NOT FOR CONSTRUCTION



LANDSCAPE AND OPEN SPACE
CIVIC CENTRE
45 Princes Highway,
Werrimbee VIC 3030
mail@wyndham.vic.gov.au
t 03 9742 0777
f 03 9741 6237
www.wyndham.vic.gov.au

PROJECT
CENTRAL PARK
SENIOR EXERCISE PARK
HOPPERS CROSSING, VIC

DRAWING TITLE
**COVER SHEET AND
LEGEND**

ISSUE
FOR QUOTE

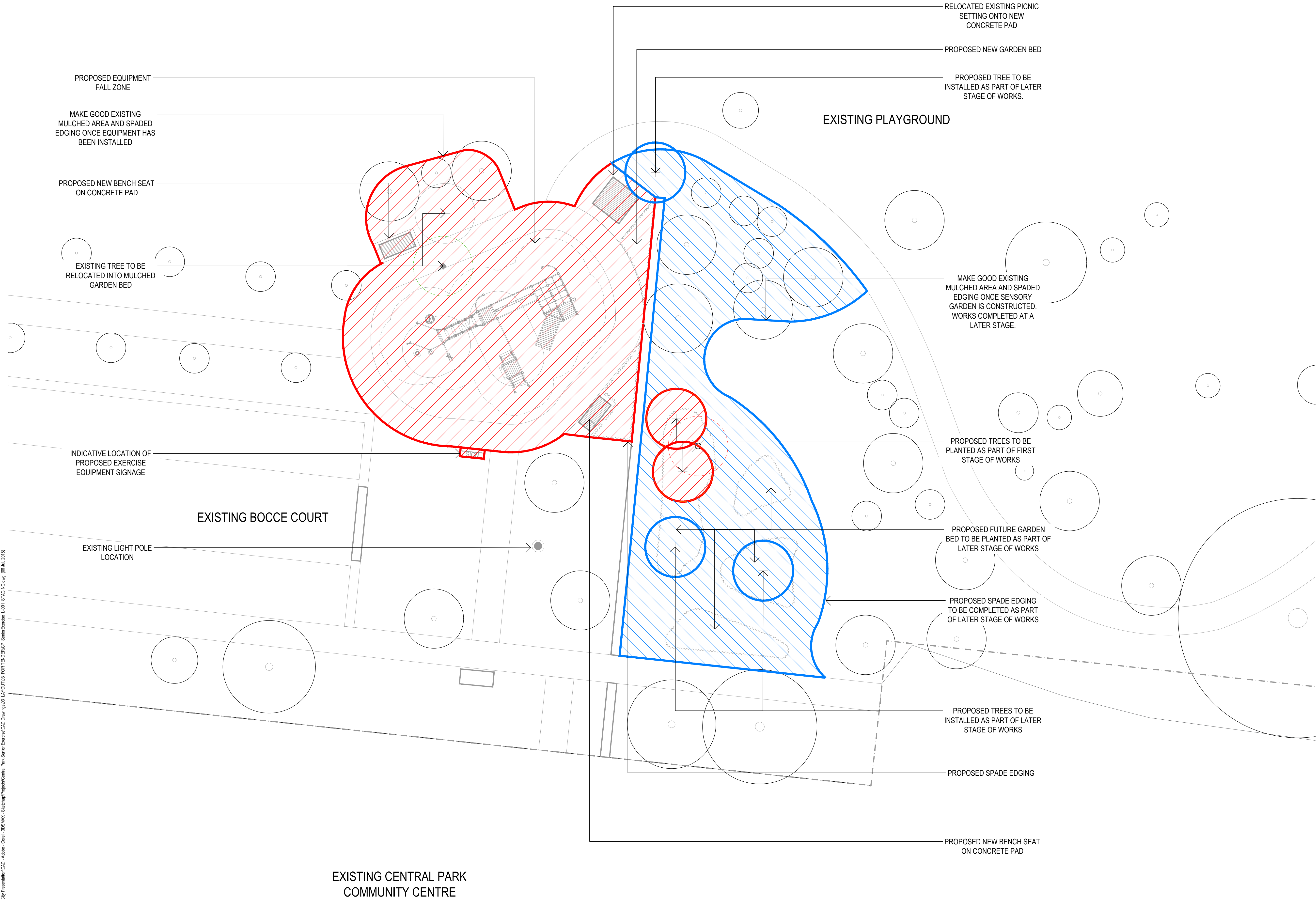
SCALE
NOT TO SCALE

DWG NO.
L-000

REV NO.
02

CAD FILE: M:\City Presentation\04 - Adobe - Corel - 3DSMAX - Sketchup\Project\Central Park Senior Exercise\CAD Drawings\03_LAYOUT\03_FOR TENDER\PCP_SeniorExercise_L-001_LAYOUT.dwg (06 Jul 2018)

EXISTING GRASSED KICKABOUT



NOTES

1. The location of existing services is to be verified on site prior to the commencement of works.
2. The Contractor shall not alter or cause damage to existing vegetation unless directed by the Superintendent in writing to remove or alter.
3. The tree protection envelope must be constructed prior to the commencement of works and must not be removed until the completion of the development.
4. Set out to be confirmed onsite by the Superintendent prior to construction.
5. All dimensions are in millimetres.
6. Written dimensions take precedence over scale.

KEY PLAN

| REV | DATE | ISSUE | DWN | CHK |
|-----|----------|------------------|-----|-----|
| 02 | 06.07.18 | FOR QUOTE | SL | PG |
| 01 | 14.06.18 | FOR CONSULTATION | SL | PG |
| 00 | 08.06.18 | DRAFT FOR REVIEW | SL | PG |

ISSUED FOR TENDER
NOT FOR CONSTRUCTION



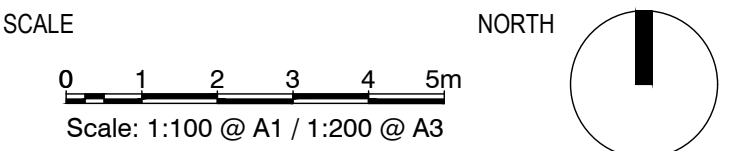
LANDSCAPE AND OPEN SPACE
CIVIC CENTRE
45 Princes Highway,
Werrbee VIC 3030
mail@wyndham.vic.gov.au

t 03 9742 0777
f 03 9741 6237
www.wyndham.vic.gov.au

PROJECT
**CENTRAL PARK
SENIOR EXERCISE PARK**
HOPPERS CROSSING, VIC

DRAWING TITLE
LANDSCAPE STAGING PLAN

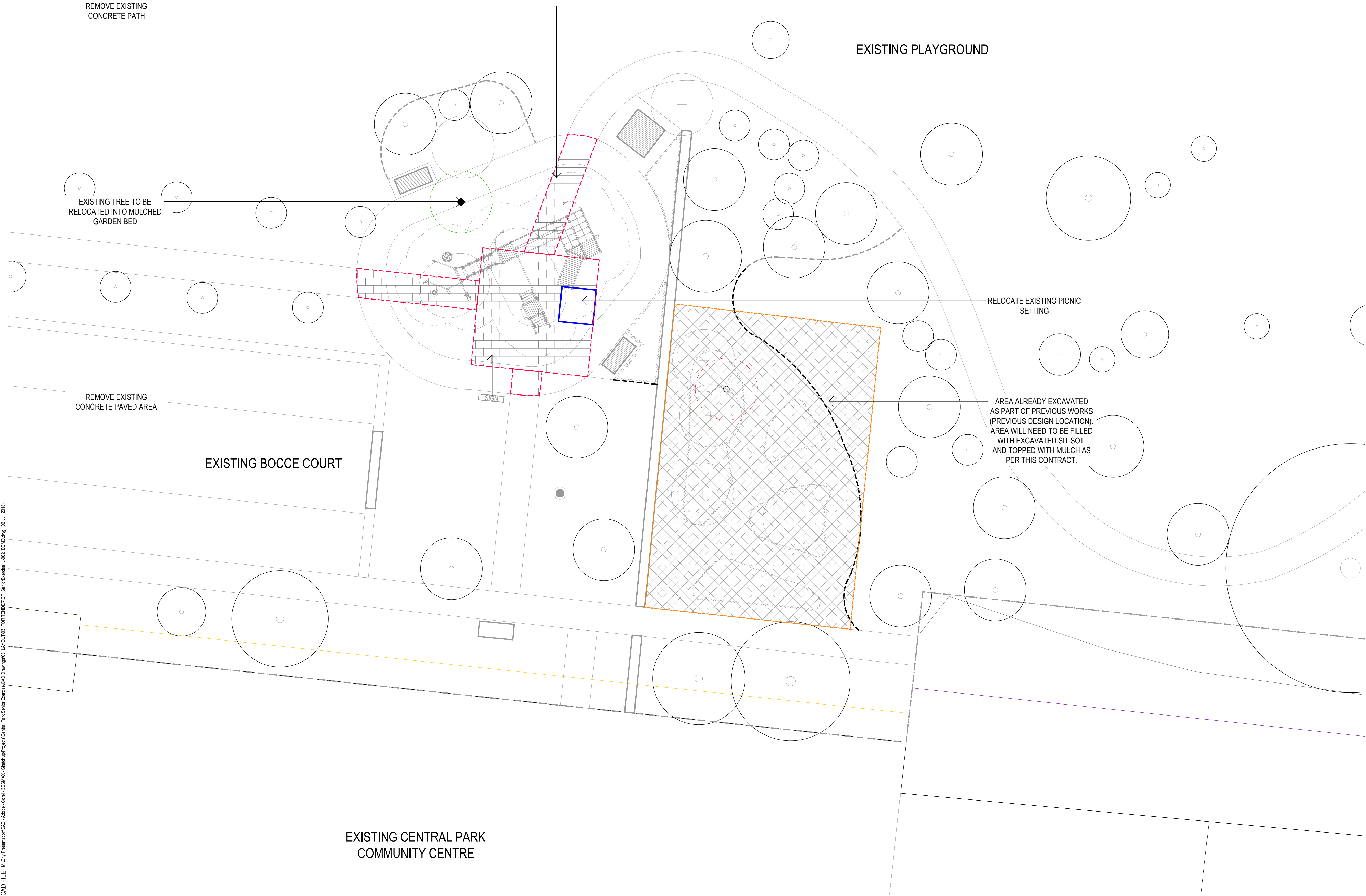
ISSUE
FOR QUOTE



DWG NO. **L-001** REV NO. **02**

CAD FILE: M:City Presentation\04 - Adobe - Corel - 3DSMAX - SketchUpProject\Central Park Senior Exercise\CAD Drawings\03_LAYOUT\03_FOR TENDER\PCP_SeniorExercise_L-002_DEMO.dwg (06 Jul 2018)

EXISTING GRASSED KICKABOUT



- NOTES
1. The location of existing services is to be verified on site prior to the commencement of works.
 2. The Contractor shall not alter or cause damage to existing vegetation unless directed by the Superintendent in writing to remove or alter.
 3. The tree protection envelope must be constructed prior to the commencement of works and must not be removed until the completion of the development.
 4. Set out to be confirmed onsite by the Superintendent prior to construction.
 5. All dimensions are in millimetres.
 6. Written dimensions take precedence over scale.

KEY PLAN

| REV | DATE | ISSUE | SL | PG | DWN | CHK |
|-----|----------|------------------|----|----|-----|-----|
| 02 | 06.07.18 | FOR QUOTE | SL | PG | | |
| 01 | 14.06.18 | FOR CONSULTATION | SL | PG | | |
| 00 | 08.06.18 | DRAFT FOR REVIEW | SL | PG | | |

ISSUED FOR TENDER
NOT FOR CONSTRUCTION



LANDSCAPE AND OPEN SPACE
CIVIC CENTRE
45 Princes Highway,
Werrbee VIC 3030
mail@wyndham.vic.gov.au
t 03 9742 0777
f 03 9741 6237
www.wyndham.vic.gov.au

PROJECT
**CENTRAL PARK
SENIOR EXERCISE PARK**
HOPPERS CROSSING, VIC

DRAWING TITLE
DEMOLITION PLAN

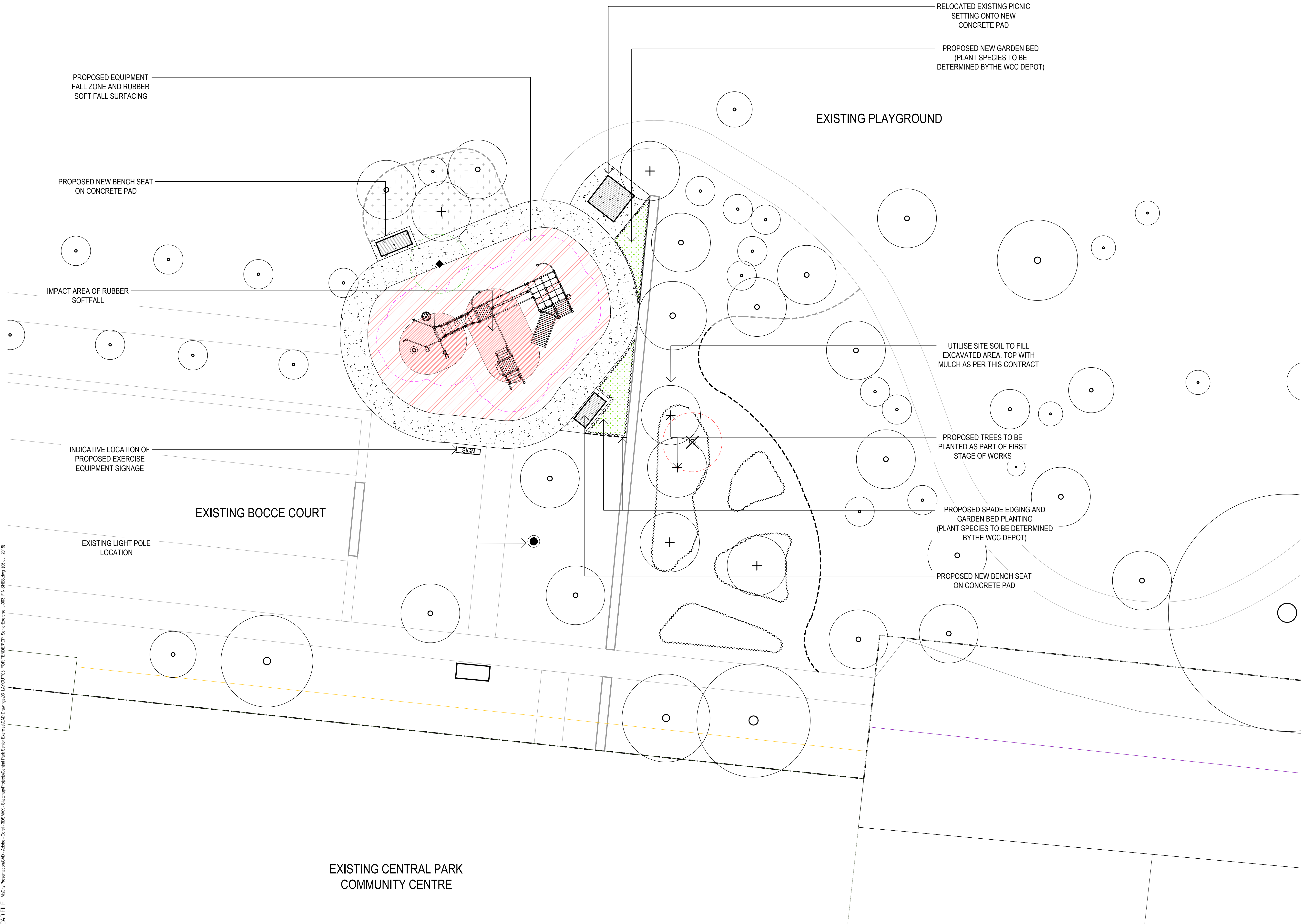
ISSUE
FOR QUOTE

SCALE
0 1 2 3 4 5m
Scale: 1:100 @ A1 / 1:200 @ A3
NORTH
Scale: 1:100 @ A1 / 1:200 @ A3

DWG NO.
L-002
REV NO.
02

CAD FILE: M:City Presentation\04 - Adobe - Corel - 3DSMAX - SketchupProject\Central Park Senior Exercise\CAD Drawings\03_LAYOUT\03_FOR TENDER\GP_SeniorExercise_L-003_FINISHES.dwg (06 Jul. 2018)

EXISTING GRASSED KICKABOUT



- NOTES
1. The location of existing services is to be verified on site prior to the commencement of works.
 2. The Contractor shall not alter or cause damage to existing vegetation unless directed by the Superintendent in writing to remove or alter.
 3. The tree protection envelope must be constructed prior to the commencement of works and must not be removed until the completion of the development.
 4. Set out to be confirmed onsite by the Superintendent prior to construction.
 5. All dimensions are in millimetres.
 6. Written dimensions take precedence over scale.

KEY PLAN

| REV | DATE | ISSUE | SL | PG | DWN | CHK |
|-----|----------|------------------|----|----|-----|-----|
| 02 | 06.07.18 | FOR QUOTE | SL | PG | | |
| 01 | 14.06.18 | FOR CONSULTATION | SL | PG | | |
| 00 | 08.06.18 | DRAFT FOR REVIEW | SL | PG | | |

ISSUED FOR TENDER
NOT FOR CONSTRUCTION

wyndhamcity
city. coast. country

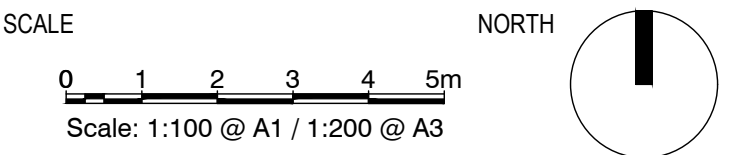
LANDSCAPE AND OPEN SPACE
CIVIC CENTRE
45 Princes Highway,
Werrimbee VIC 3030
mail@wyndham.vic.gov.au

t 03 9742 0777
f 03 9741 6237
www.wyndham.vic.gov.au

PROJECT
CENTRAL PARK
SENIOR EXERCISE PARK
HOPPERS CROSSING, VIC

DRAWING TITLE
FINISHES PLAN

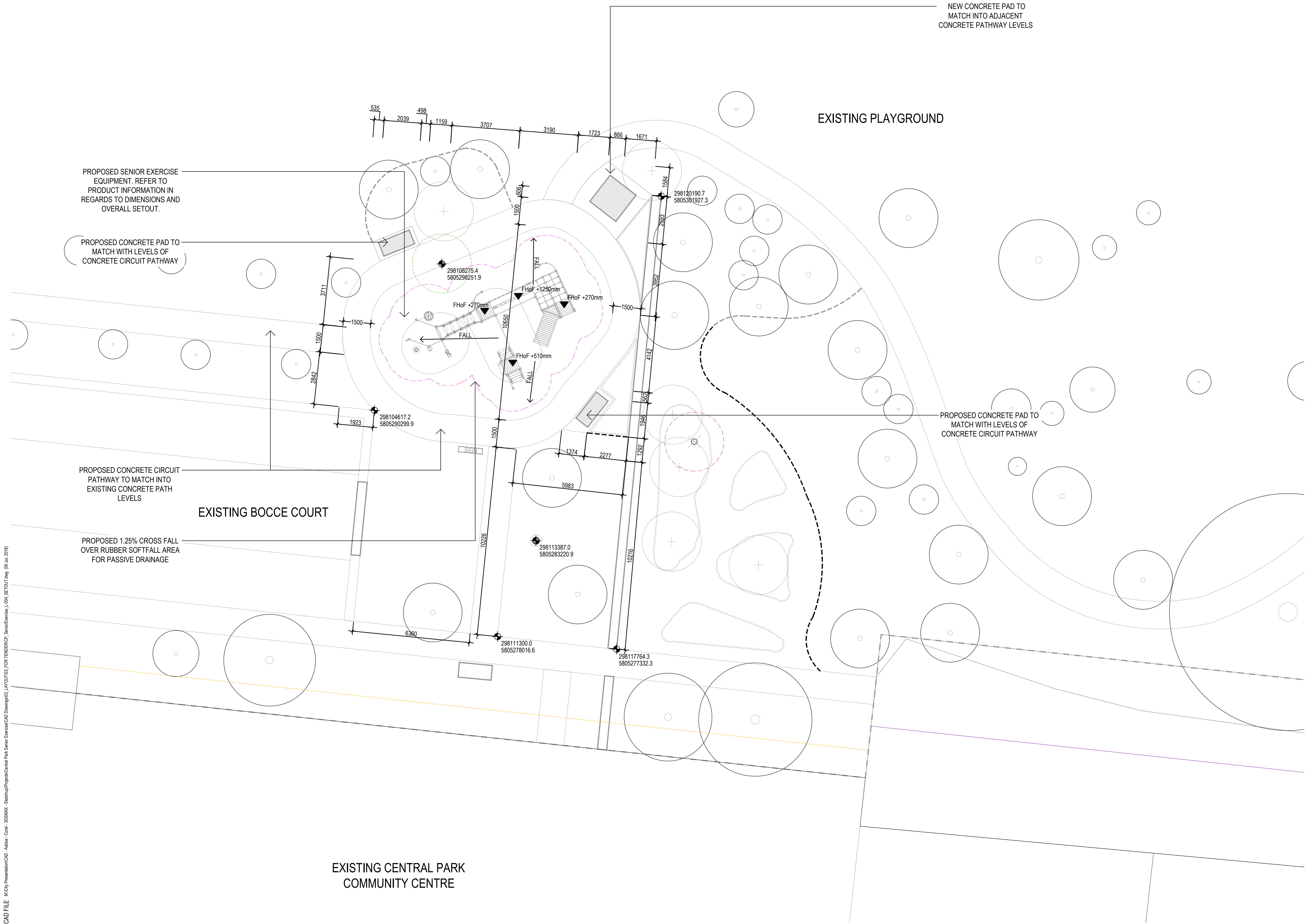
ISSUE
FOR QUOTE



DWG NO.
L-003

REV NO.
02

EXISTING GRASSED KICKABOUT



- NOTES
1. The location of existing services is to be verified on site prior to the commencement of works.
 2. The Contractor shall not alter or cause damage to existing vegetation unless directed by the Superintendent in writing to remove or alter.
 3. The tree protection envelope must be constructed prior to the commencement of works and must not be removed until the completion of the development.
 4. Set out to be confirmed onsite by the Superintendent prior to construction.
 5. All dimensions are in millimetres.
 6. Written dimensions take precedence over scale.

KEY PLAN

| REV | DATE | ISSUE | SL | PG | DWN | CHK |
|-----|----------|------------------|----|----|-----|-----|
| 02 | 06.07.18 | FOR QUOTE | SL | PG | | |
| 01 | 14.06.18 | FOR CONSULTATION | SL | PG | | |
| 00 | 08.06.18 | DRAFT FOR REVIEW | SL | PG | | |

ISSUED FOR TENDER
NOT FOR CONSTRUCTION

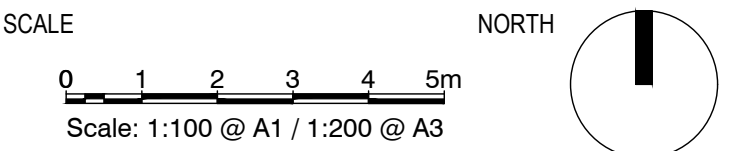


LANDSCAPE AND OPEN SPACE
CIVIC CENTRE
45 Princes Highway,
Werrimbee VIC 3030
mail@wyndham.vic.gov.au
t 03 9742 0777
f 03 9741 6237
www.wyndham.vic.gov.au

PROJECT
**CENTRAL PARK
SENIOR EXERCISE PARK**
HOPPERS CROSSING, VIC

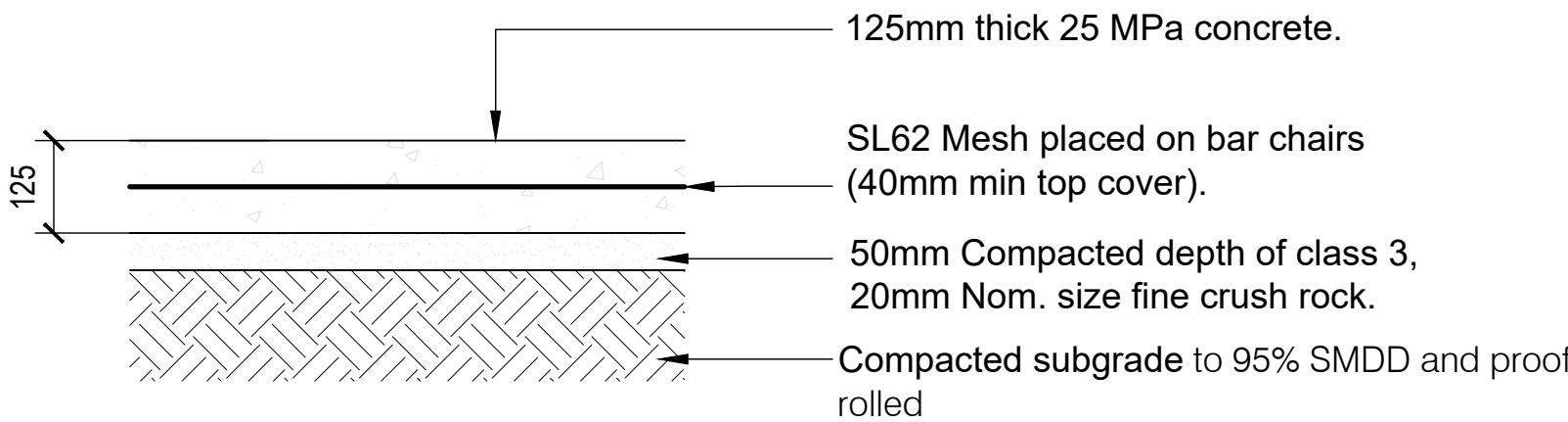
DRAWING TITLE
SETOUT PLAN

ISSUE
FOR QUOTE



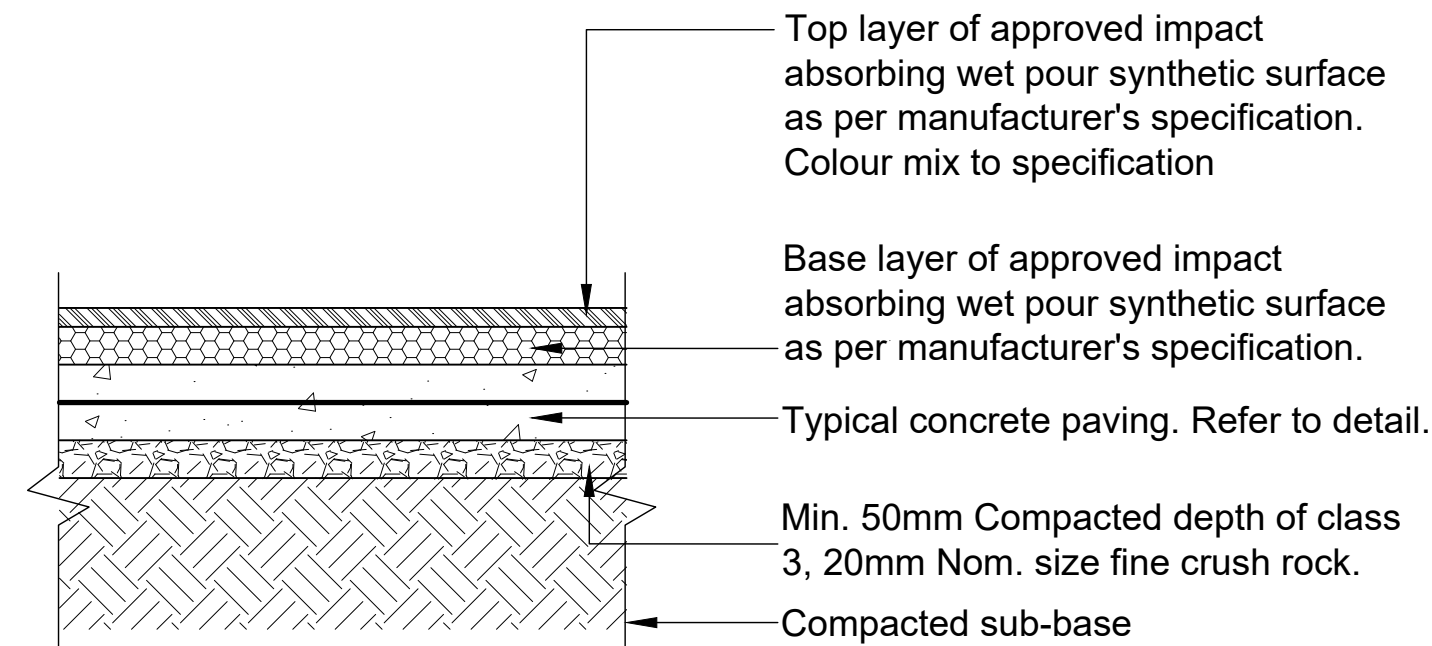
DWG NO. **L-004**
REV NO. **02**

- Note:
- Concrete strength is 25mpa at 28 days.
 - Concrete finish to be light broom finish with edges neatly ooled after the broom is applied (no bullnoses).
 - Path to have 30mm deep sawcut joints at every 4 square meters (no tooled joints) and expansion joints at 24 square meters max as directed by superintendent.
 - All surfaces must comply with AS4586 - slip resistance classification of new pedestrian surface materials.
 - Deformed bars must be aligned horizontally and parrallel.
 - All steel reinforcement mesh to have 40mm top cover.
 - Remedial grass seeding to any areas of grass damaged as a result of construction works.

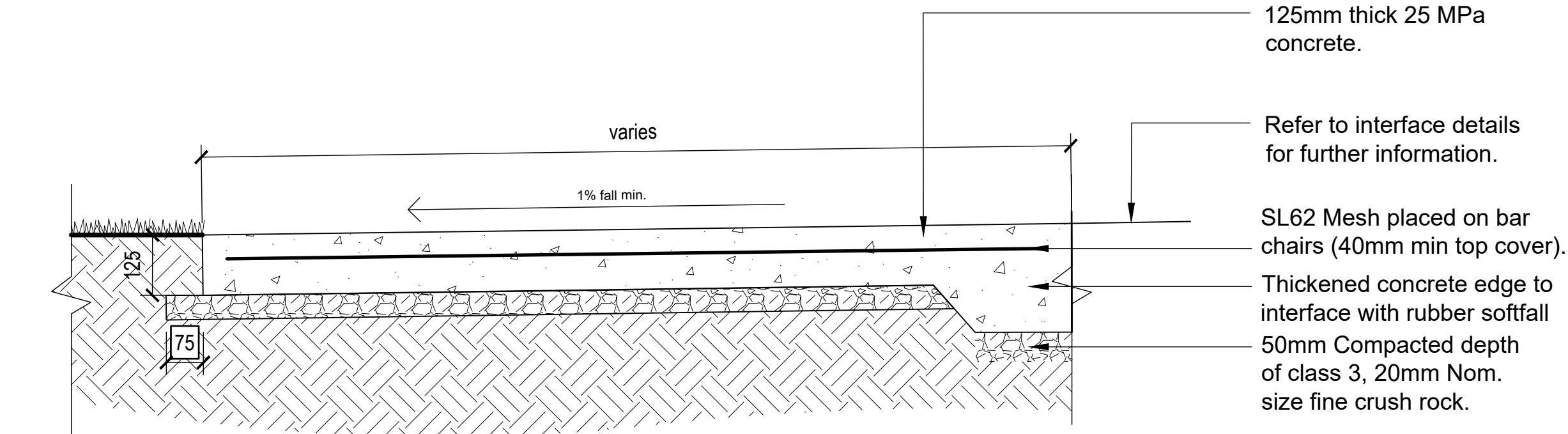


01 TYPICAL CONCRETE DETAIL
L-005 Scale 1:10 @ A1

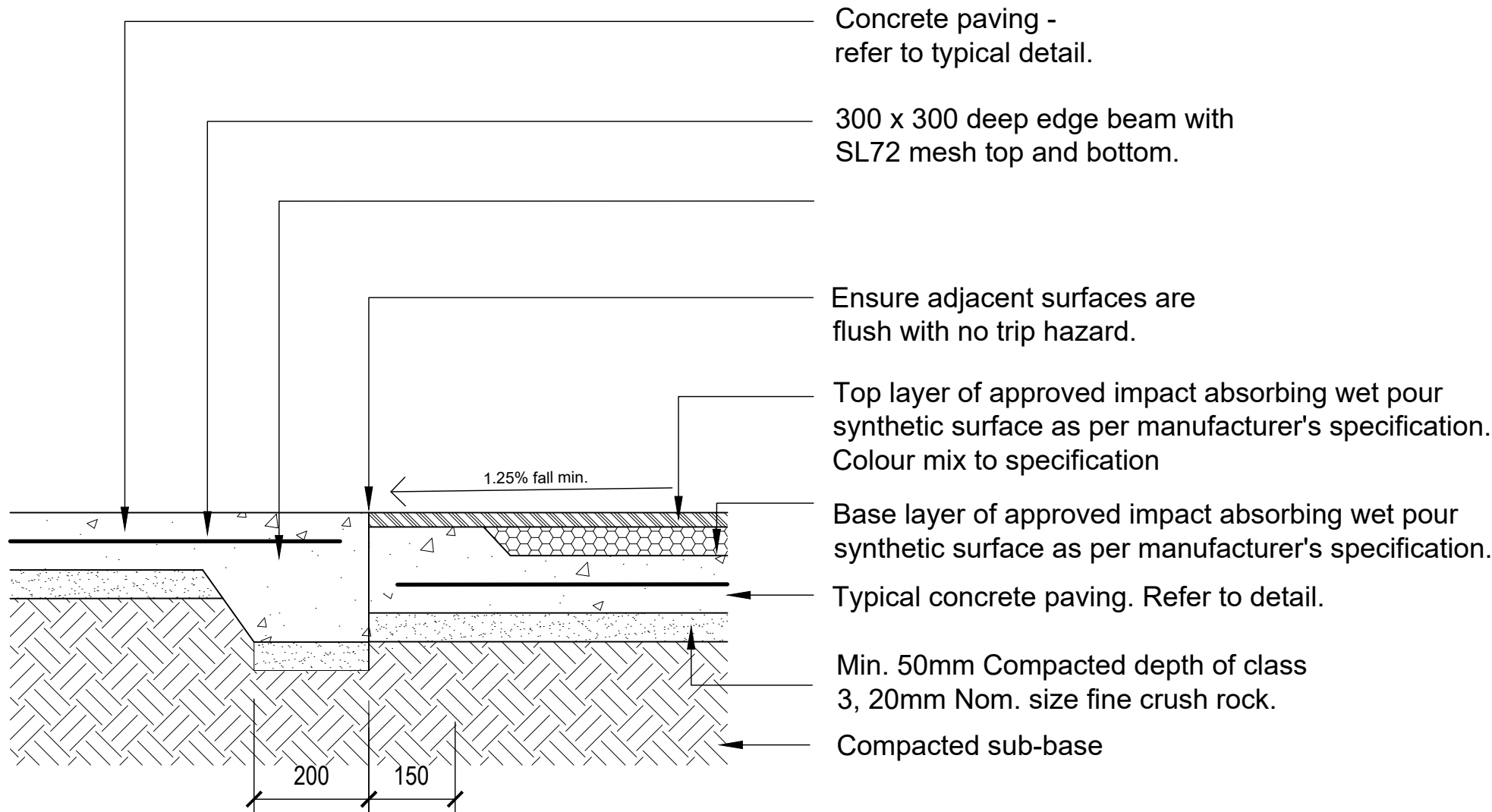
- Note:
- Refer to playground equipment supplier for 'Free Height of Fall' information.
 - Refer to playground equipment supplier for information pertaining to Falling Space and Impact area



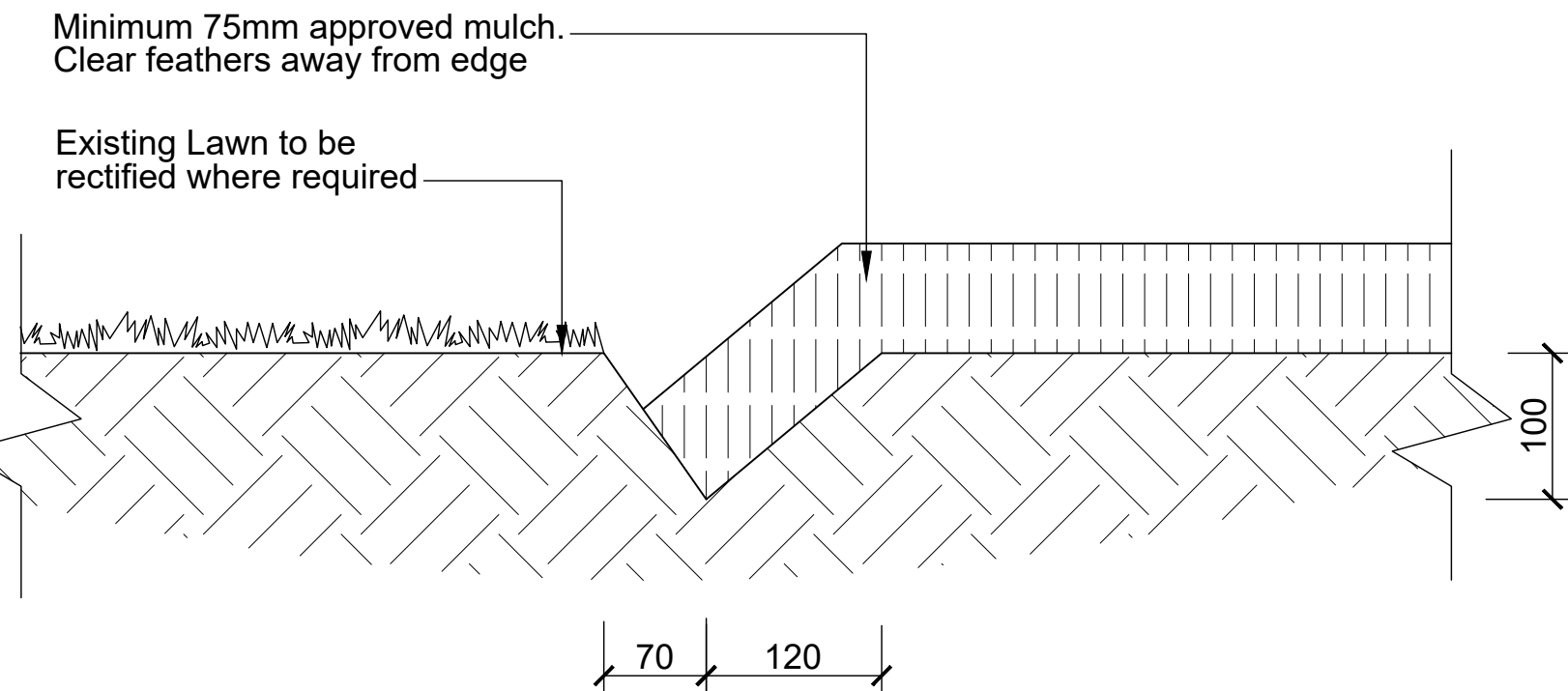
03 TYPICAL RUBBER SOFT-FALL DETAIL
L-005 Scale 1:10 @ A1



02 CONCRETE PATH DETAIL
L-005 Scale 1:10 @ A1



04 CONCRETE EDGE THICKENING/ RUBBER SOFT-FALL INTERFACE DETAIL
L-005 Scale 1:10 @ A1



06 TYPICAL SPADE EDGE DETAIL
L-005 Scale 1:5 @ A1

- NOTES
- The location of existing services is to be verified on site prior to the commencement of works.
 - The Contractor shall not alter or cause damage to existing vegetation unless directed by the Superintendent in writing to remove or alter.
 - The tree protection envelope must be constructed prior to the commencement of works and must not be removed until the completion of the development.
 - Set out to be confirmed onsite by the Superintendent prior to construction.
 - All dimensions are in millimetres.
 - Written dimensions take precedence over scale.

KEY PLAN

| | | | | | |
|-----|----------|------------------|-----|-----|--|
| | | | | | |
| | | | | | |
| | | | | | |
| | | | | | |
| | | | | | |
| | | | | | |
| | | | | | |
| | | | | | |
| | | | | | |
| | | | | | |
| 02 | 06.07.18 | FOR QUOTE | SL | PG | |
| 01 | 14.06.18 | FOR CONSULTATION | SL | PG | |
| 00 | 08.06.18 | DRAFT FOR REVIEW | SL | PG | |
| REV | DATE | ISSUE | DWN | CHK | |

ISSUED FOR TENDER
NOT FOR CONSTRUCTION



LANDSCAPE AND OPEN SPACE
CIVIC CENTRE
45 Princes Highway,
Werrimbee VIC 3030
mail@wyndham.vic.gov.au
t 03 9742 0777
f 03 9741 6237
www.wyndham.vic.gov.au

PROJECT
CENTRAL PARK
SENIOR EXERCISE PARK
HOPPERS CROSSING, VIC

DRAWING TITLE
LANDSCAPE DETAILS

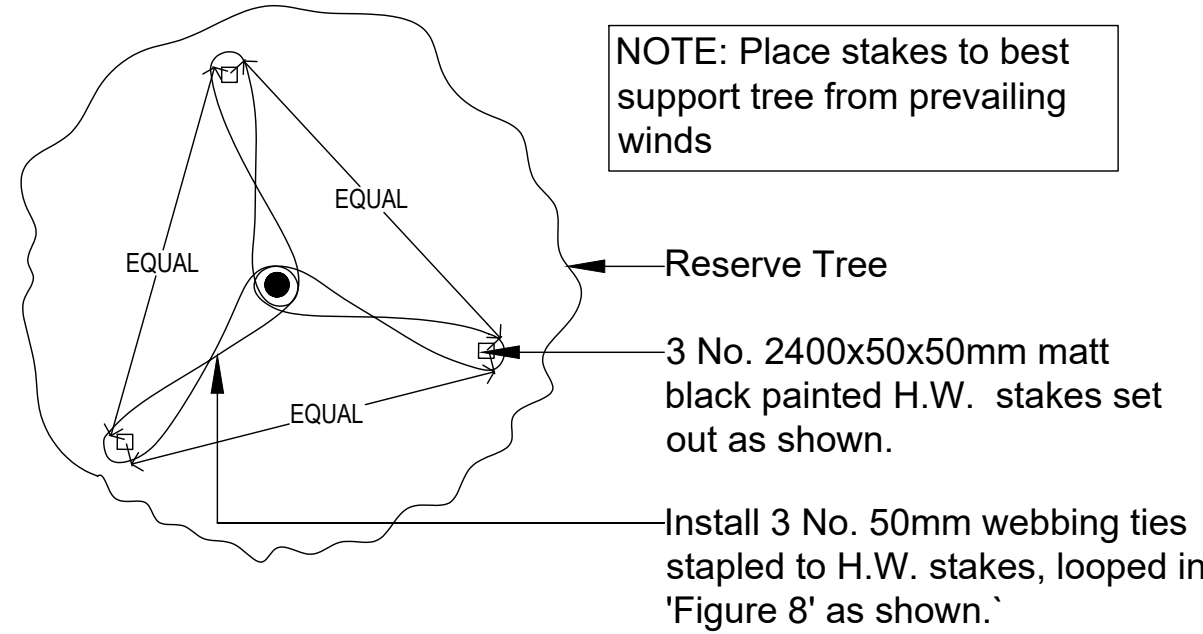
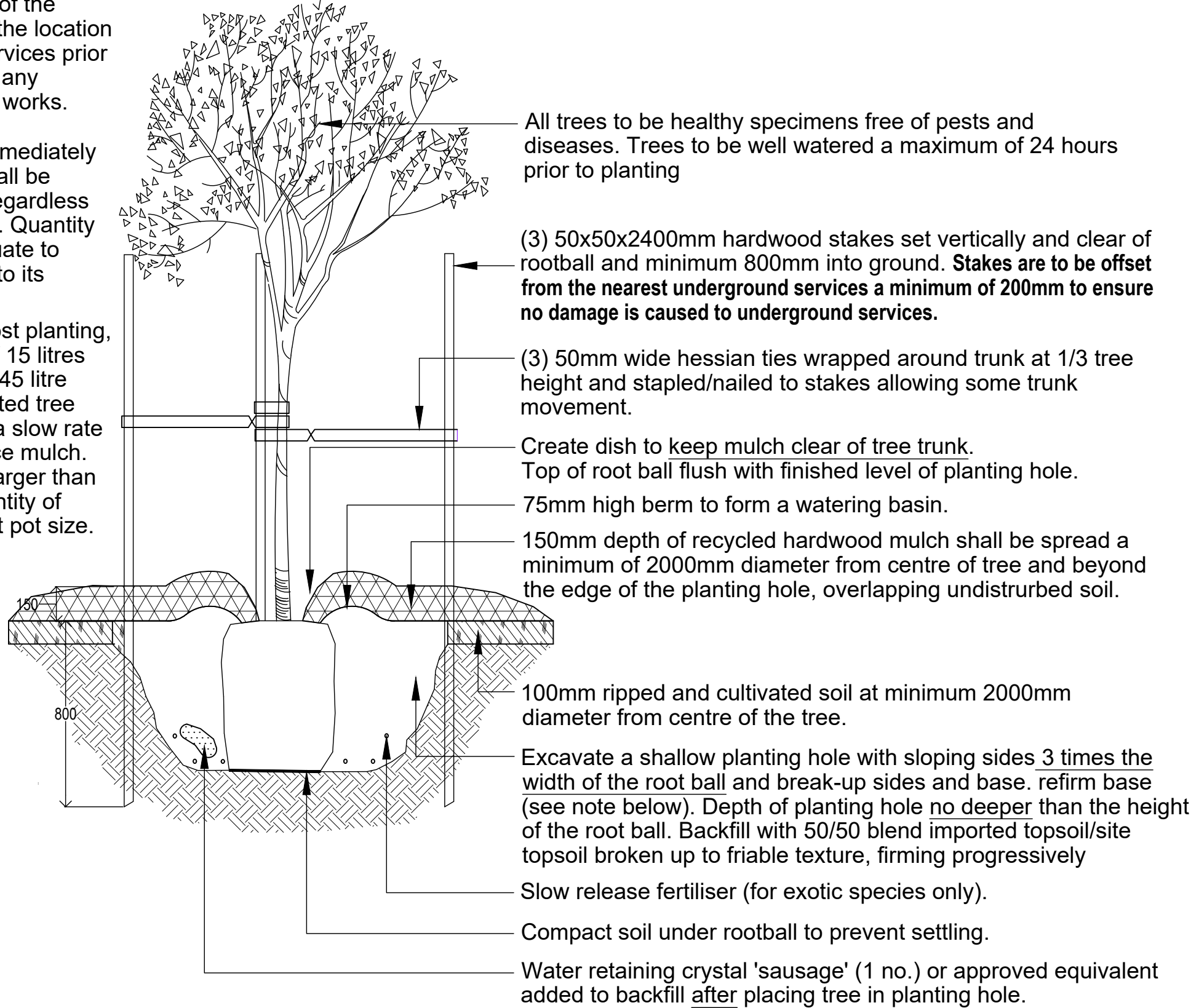
ISSUE
FOR QUOTE
SCALE NORTH
AS SHOWN

DWG NO. REV NO.
L-005 02

NOTE
It is the responsibility of the contractor to confirm the location of all underground services prior to commencement of any excavation or staking works.

Tree Watering (1): Immediately after planting, tree shall be watered thoroughly regardless of weather conditions. Quantity of water will be adequate to saturate the root ball to its core.

Tree Watering (2): Post planting, provide a minimum of 15 litres of water (for tree in a 45 litre pot) to the newly planted tree per 7 days. Water at a slow rate such as not to displace mulch. For trees in pot size larger than 45 litres, provide quantity of water one third of that pot size.

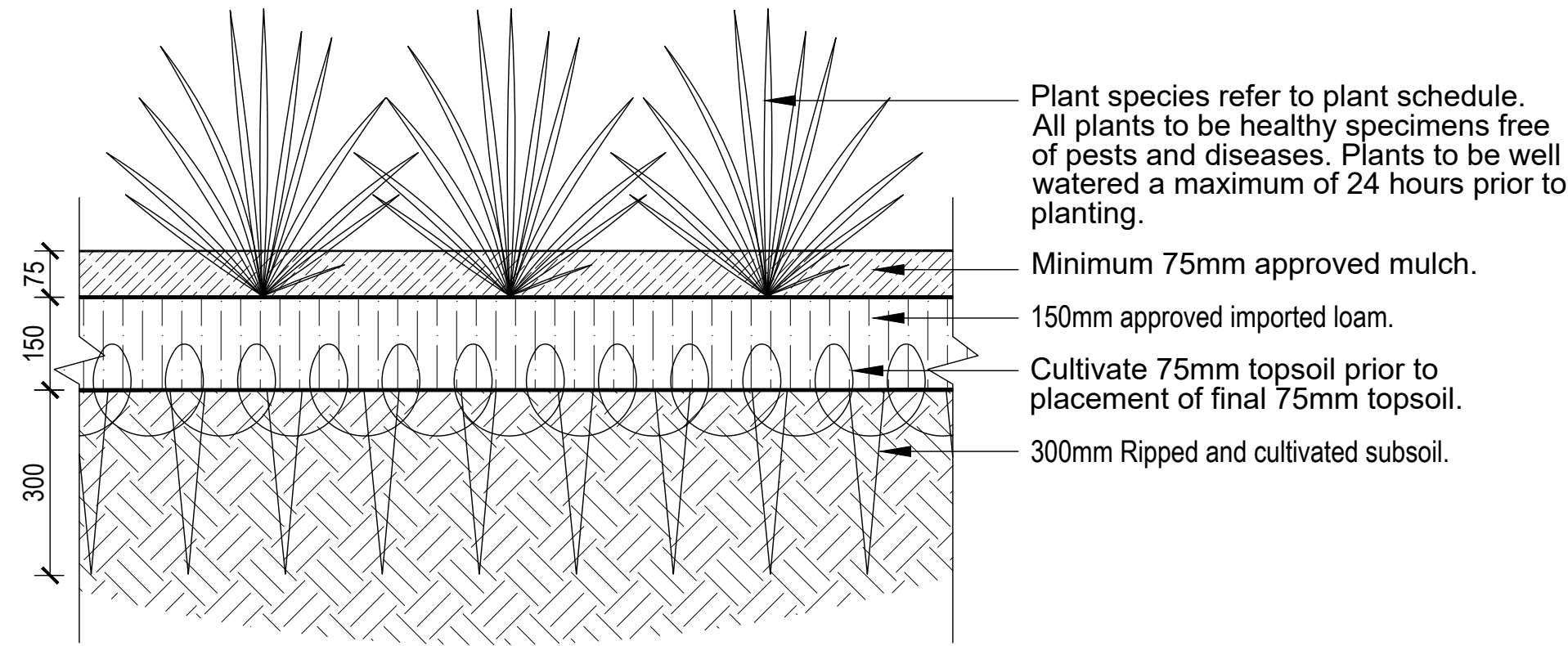


01 SEMI-ADVANCED TREE PLANTING DETAIL

L-006 Scale 1:20 @ A1

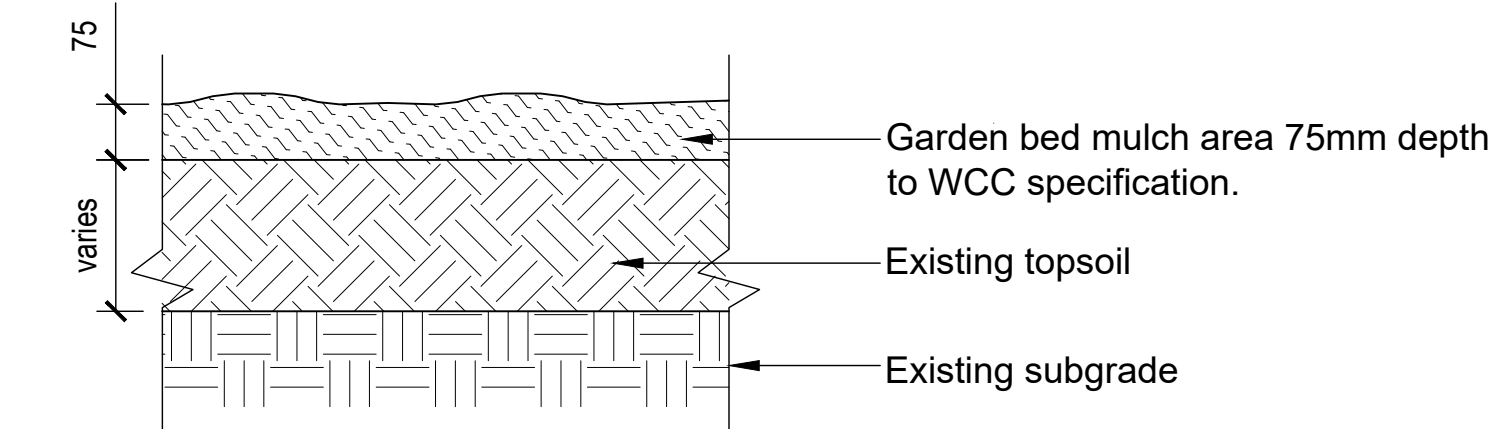
02 TREE STAKE DETAIL

L-006 Scale 1:20 @ A1



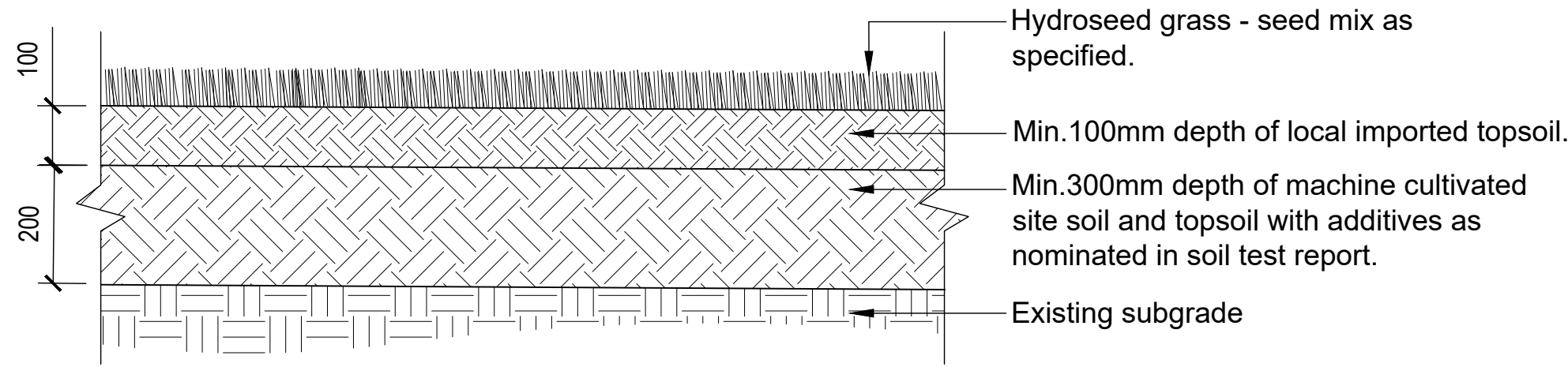
03 TYPICAL GARDENBED DETAIL

L-006 Scale 1:10 @ A1



05 TYPICAL GARDEN MULCH DETAIL

L-006 Scale 1:10 @ A1



04 HYDROSEED GRASS DETAIL

L-006 Scale 1:10 @ A1

- NOTES
1. The location of existing services is to be verified on site prior to the commencement of works.
 2. The Contractor shall not alter or cause damage to existing vegetation unless directed by the Superintendent in writing to remove or alter.
 3. The tree protection envelope must be constructed prior to the commencement of works and must not be removed until the completion of the development.
 4. Set out to be confirmed onsite by the Superintendent prior to construction.
 5. All dimensions are in millimetres.
 6. Written dimensions take precedence over scale.

KEY PLAN

| | | | | |
|-----|----------|------------------|-----|-----|
| | | | | |
| | | | | |
| | | | | |
| | | | | |
| | | | | |
| | | | | |
| | | | | |
| | | | | |
| | | | | |
| | | | | |
| 02 | 06.07.18 | FOR QUOTE | SL | PG |
| 01 | 14.06.18 | FOR CONSULTATION | SL | PG |
| 00 | 08.06.18 | DRAFT FOR REVIEW | SL | PG |
| REV | DATE | ISSUE | DWN | CHK |

ISSUED FOR TENDER
NOT FOR CONSTRUCTION



LANDSCAPE AND OPEN SPACE
CIVIC CENTRE
45 Princes Highway,
Werrimbee VIC 3030
mail@wyndham.vic.gov.au
t 03 9742 0777
f 03 9741 6237
www.wyndham.vic.gov.au

PROJECT
CENTRAL PARK
SENIOR EXERCISE PARK
HOPPERS CROSSING, VIC

DRAWING TITLE
LANDSCAPE DETAILS

ISSUE
FOR QUOTE

SCALE
NORTH
AS SHOWN

DWG NO.
L-006
REV NO.
02