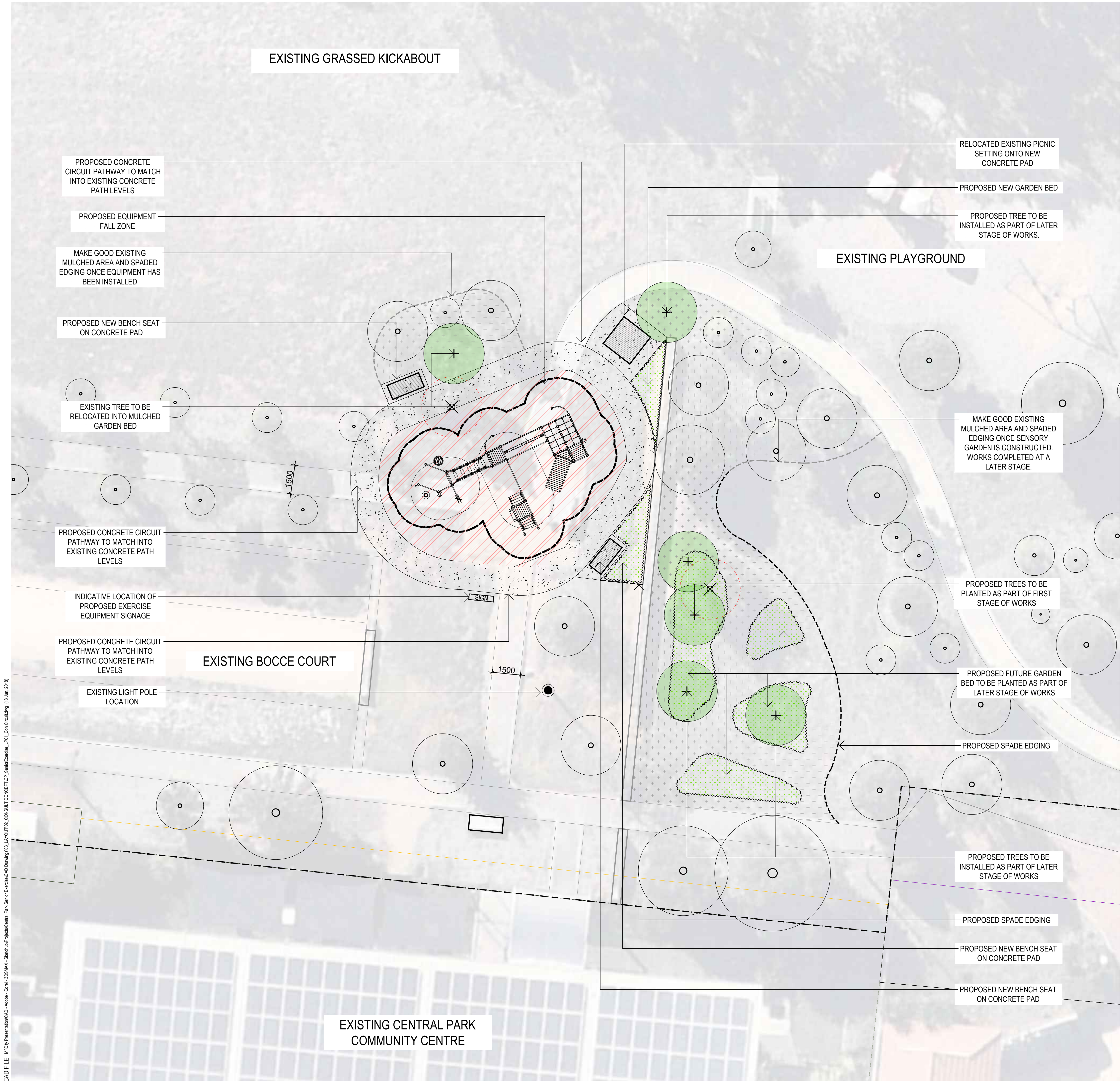


CAD FILE: M:City Presentation\CAD - Adobe - Corel - 3DSMAX - SketchUpProject\Central Park Senior Exercise\CAD Drawings\03_LAYOUT\02_CONSULT CONCEPT\03_SeniorExercise_LP01_Con Consulting (18 Jun 2018)



LEGEND

- EXISTING TREE TO BE RETAINED
- EXISTING TREE TO BE REMOVED OR RELOCATED REFER TO PLAN FOR SPECIFIC TREE
- PROPOSED TREE E.G. Olea europaea PROPOSED SPECIES TO FUTURE DETAIL
- PROPOSED CONCRETE PATH
- PROPOSED RUBBER SOFTFALL PROPOSED COLOUR TO FUTURE DETAIL
- PROPOSED GARDEN BED PROPOSED SPECIES MIX TO FUTURE DETAIL
- PROPOSED MULCHED BED
- EXISTING LIGHT POLE TO BE RETAINED
- PROPOSED SPADED EDGE EDGING BETWEEN SOFTSCAPE SURFACES
- EXISTING SPADED EDGE TO BE REINSTATED
- PROPOSED BENCH SEAT
- PROPOSED PICNIC SETTING
- PROPOSED SIGNAGE INDICATIVE LOCATION TO FUTURE DETAIL

NOTES

- The location of existing services is to be verified on site prior to the commencement of works.
- The Contractor shall not alter or cause damage to existing vegetation unless directed by the Superintendent in writing to remove or alter.
- The tree protection envelope must be constructed prior to the commencement of works and must not be removed until the completion of the development.
- Set out to be confirmed onsite by the Superintendent prior to construction.
- All dimensions are in millimetres.
- Written dimensions take precedence over scale.

KEY PLAN

01	14.06.18	FOR CONSULTATION	SL	PG
00	08.06.18	DRAFT FOR REVIEW	SL	PG
REV	DATE	ISSUE	DWN	CHK

CONCEPT DRAWING
NOT FOR CONSTRUCTION



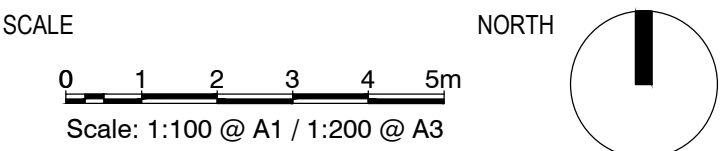
LANDSCAPE AND OPEN SPACE
CIVIC CENTRE
45 Princes Highway,
Werrbee VIC 3030
mail@wyndham.vic.gov.au

t 03 9742 0777
f 03 9741 6237
www.wyndham.vic.gov.au

PROJECT
**CENTRAL PARK
SENIOR EXERCISE PARK**

DRAWING TITLE
LANDSCAPE PLAN

ISSUE
FOR CONSULTATION



DWG NO.
LP01

REV NO.
01